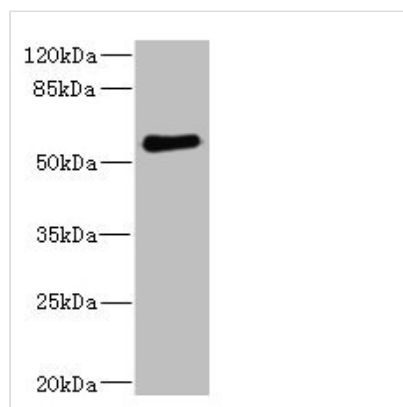




FCRL2 Antibody

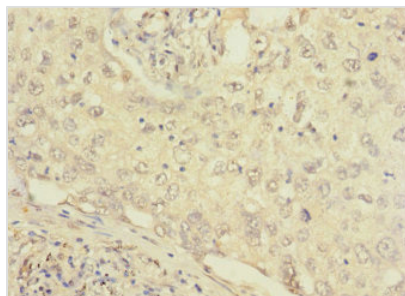
Product Code	CSB-PA853454ESR1HU
Storage	Upon receipt, store at -20°C or -80°C. Avoid repeated freeze.
Uniprot No.	Q96LA5
Immunogen	Recombinant Human Fc receptor-like protein 2 protein (20-100AA)
Raised In	Rabbit
Species Reactivity	Human
Tested Applications	ELISA, WB, IHC; Recommended dilution: WB:1:1000-1:5000, IHC:1:20-1:200
Form	Liquid
Conjugate	Non-conjugated
Storage Buffer	PBS with 0.02% sodium azide, 50% glycerol, pH7.3.
Purification Method	Antigen Affinity Purified
Isotype	IgG
Clonality	Polyclonal
Alias	Fc receptor-like protein 2 (FcR-like protein 2) (FcRL2) (Fc receptor homolog 2) (FcRH2) (IFGP family protein 4) (Immunoglobulin receptor translocation-associated protein 4) (SH2 domain-containing phosphatase anchor protein 1) (CD antigen CD307b), FCRL2, FCRH2 IFGP4 IRTA4 SPAP1
Immunogen Species	Homo sapiens (Human)
Research Area	Immunology
Target Names	FCRL2

Image

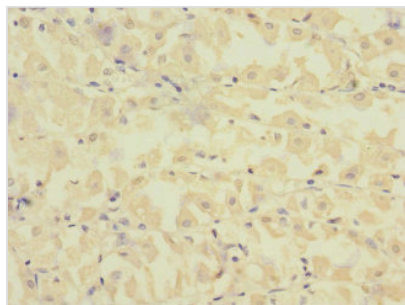


Western blot

All lanes: FCRL2 antibody at 1.78µg/ml + 293T whole cell lysate
 Secondary
 Goat polyclonal to rabbit IgG at 1/10000 dilution
 Predicted band size: 56, 28, 21, 16, 23 kDa
 Observed band size: 56 kDa



Immunohistochemistry of paraffin-embedded human lung cancer using CSB-PA853454ESR1HU at dilution of 1:100



Immunohistochemistry of paraffin-embedded human gastric cancer using CSB-PA853454ESR1HU at dilution of 1:100

Usage

For Research Use Only. Not for use in diagnostic or therapeutic procedures.