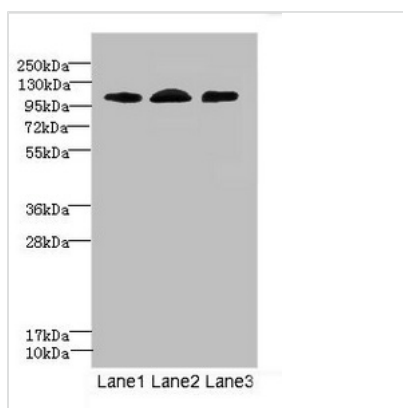




# EPHB4 Antibody

<b>Product Code</b>	CSB-PA007732ESR1HU
<b>Storage</b>	Upon receipt, store at -20°C or -80°C. Avoid repeated freeze.
<b>Uniprot No.</b>	P54760
<b>Immunogen</b>	Recombinant Human Ephrin type-B receptor 4 protein (300-540AA)
<b>Raised In</b>	Rabbit
<b>Species Reactivity</b>	Human
<b>Tested Applications</b>	ELISA, WB, IHC; Recommended dilution: WB:1:1000-1:5000, IHC:1:20-1:200
<b>Form</b>	Liquid
<b>Conjugate</b>	Non-conjugated
<b>Storage Buffer</b>	PBS with 0.02% sodium azide, 50% glycerol, pH7.3.
<b>Purification Method</b>	Antigen Affinity Purified
<b>Isotype</b>	IgG
<b>Clonality</b>	Polyclonal
<b>Alias</b>	Ephrin type-B receptor 4 (EC 2.7.10.1) (Hepatoma transmembrane kinase) (Tyrosine-protein kinase TYRO11), EPHB4, HTK MYK1 TYRO11
<b>Immunogen Species</b>	Homo sapiens (Human)
<b>Research Area</b>	Cardiovascular
<b>Target Names</b>	EPHB4

## Image



### Western blot

All lanes: EPHB4 antibody at 2.71µg/ml

Lane 1: A549 whole cell lysate

Lane 2: 293T whole cell lysate

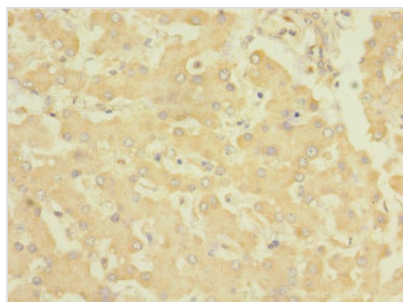
Lane 3: HeLa whole cell lysate

Secondary

Goat polyclonal to rabbit IgG at 1/10000 dilution

Predicted band size: 109, 56, 34, 46 kDa

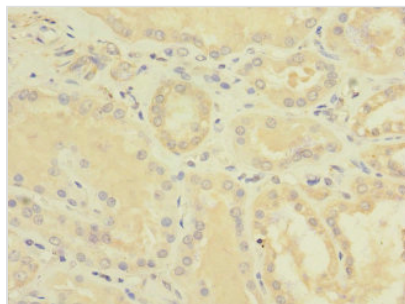
Observed band size: 109 kDa



Immunohistochemistry of paraffin-embedded

human liver tissue using CSB-

PA007732ESR1HU at dilution of 1:100



Immunohistochemistry of paraffin-embedded human kidney tissue using CSB-PA007732ESR1HU at dilution of 1:100

**Usage**

For Research Use Only. Not for use in diagnostic or therapeutic procedures.