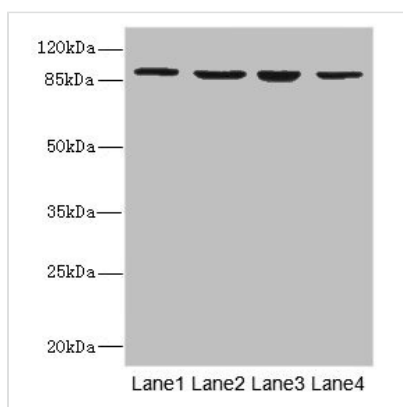




ITGB7 Antibody

Product Code	CSB-PA011891ESR1HU
Storage	Upon receipt, store at -20°C or -80°C. Avoid repeated freeze.
Uniprot No.	P26010
Immunogen	Recombinant Human Integrin beta-7 protein (1-140AA)
Raised In	Rabbit
Species Reactivity	Human
Tested Applications	ELISA, WB, IHC; Recommended dilution: WB:1:1000-1:5000, IHC:1:20-1:200
Form	Liquid
Conjugate	Non-conjugated
Storage Buffer	PBS with 0.02% sodium azide, 50% glycerol, pH7.3.
Purification Method	Antigen Affinity Purified
Isotype	IgG
Clonality	Polyclonal
Alias	Integrin beta-7 (Gut homing receptor beta subunit), ITGB7
Immunogen Species	Homo sapiens (Human)
Research Area	Signal Transduction
Target Names	ITGB7

Image



Western blot

All lanes: ITGB7 antibody at 5.04μg/ml

Lane 1: MCF-7 whole cell lysate

Lane 2: HepG2 whole cell lysate

Lane 3: A549 whole cell lysate

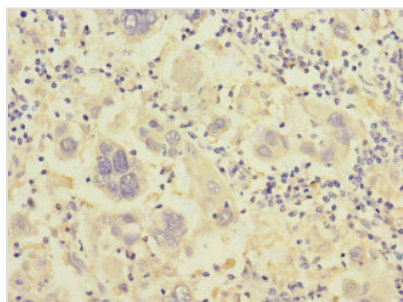
Lane 4: K562 whole cell lysate

Secondary

Goat polyclonal to rabbit IgG at 1/10000 dilution

Predicted band size: 87, 72 kDa

Observed band size: 87 kDa



Immunohistochemistry of paraffin-embedded human liver cancer using CSB-PA011891ESR1HU at dilution of 1:100