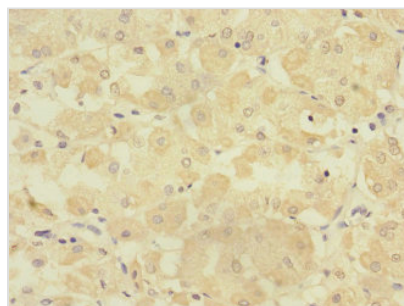


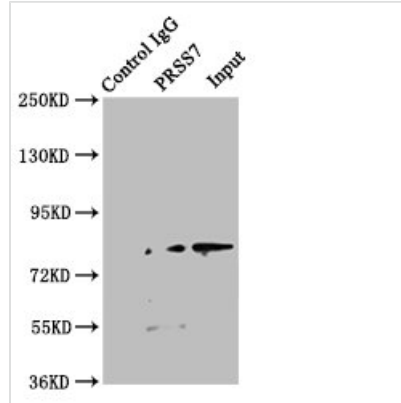


TMPRSS15 Antibody

Product Code	CSB-PA018824ESR2HU
Storage	Upon receipt, store at -20°C or -80°C. Avoid repeated freeze.
Uniprot No.	P98073
Immunogen	Recombinant Human Enteropeptidase protein (40-300AA)
Raised In	Rabbit
Species Reactivity	Human
Tested Applications	ELISA, IHC, IP; Recommended dilution: IHC:1:20-1:200, IP:1:200-1:2000
Form	Liquid
Conjugate	Non-conjugated
Storage Buffer	PBS with 0.02% sodium azide, 50% glycerol, pH7.3.
Purification Method	Antigen Affinity Purified
Isotype	IgG
Clonality	Polyclonal
Alias	Enteropeptidase (EC 3.4.21.9) (Enterokinase) (Serine protease 7) (Transmembrane protease serine 15) [Cleaved into: Enteropeptidase non-catalytic heavy chain; Enteropeptidase catalytic light chain], TMPRSS15, ENTK PRSS7
Immunogen Species	Homo sapiens (Human)
Research Area	Cell Biology
Target Names	TMPRSS15

Image


Immunohistochemistry of paraffin-embedded human gastric cancer using CSB-PA018824ESR2HU at dilution of 1:100



Immunoprecipitating PRSS7 in Jurkat whole cell lysate

Lane 1: Rabbit control IgG instead of CSB-PA018824ESR2HU in Jurkat whole cell lysate. For western blotting, a HRP-conjugated Protein G antibody was used as the secondary antibody (1/2000)

Lane 2: CSB-PA018824ESR2HU (8 μ g) + Jurkat whole cell lysate (500 μ g)

Lane 3: Jurkat whole cell lysate (10 μ g)

Usage

For Research Use Only. Not for use in diagnostic or therapeutic procedures.