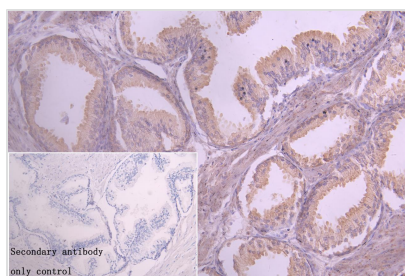




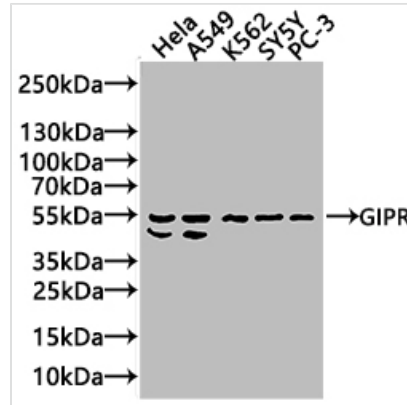
GIPR Antibody

Product Code	CSB-PA009438ESR1HU
Storage	Upon receipt, store at -20°C or -80°C. Avoid repeated freeze.
Uniprot No.	P48546
Immunogen	The antiserum was produced against synthesized peptide derived from human GIPR
Raised In	Rabbit
Species Reactivity	Human
Tested Applications	ELISA, WB, IHC; Recommended dilution: WB:1:1000-1:3000, IHC:1:20-1:100
Form	Liquid
Conjugate	Non-conjugated
Storage Buffer	Liquid in PBS containing 50% glycerol, 0.5% BSA and 0.02% sodium azide.
Purification Method	Antigen Affinity Purified
Isotype	IgG
Clonality	Polyclonal
Product Type	Polyclonal Antibody
Immunogen Species	Homo sapiens (Human)
Research Area	Neuroscience
Target Names	GIPR

Image



IHC image of CSB-PA009438ESR1HU diluted at 1:100 and staining in paraffin-embedded human prostate cancer performed on a Leica Bond™ system. After dewaxing and hydration, antigen retrieval was mediated by high pressure in a citrate buffer (pH 6.0). Section was blocked with 10% normal goat serum 30min at RT. Then primary antibody (1% BSA) was incubated at 4°C overnight. The primary is detected by a Goat anti-rabbit polymer IgG labeled by HRP and visualized using 0.05% DAB. Secondary antibody only control: uses 1% BSA instead of primary antibody



Western Blot

Positive WB detected in: HeLa whole cell lysate(20µg), A549 whole cell lysate(20µg), K562 whole cell lysate(20µg), SY5Y whole cell lysate(20µg), PC-3 whole cell lysate(20µg)

All lanes: GIPR antibody at 1:1000

Secondary

Goat polyclonal to rabbit IgG at 1/20000 dilution

Predicted band size: 54,49,50 kDa

Observed band size: 54,50 kDa

Exposure time: 10s

Usage

For Research Use Only. Not for use in diagnostic or therapeutic procedures.