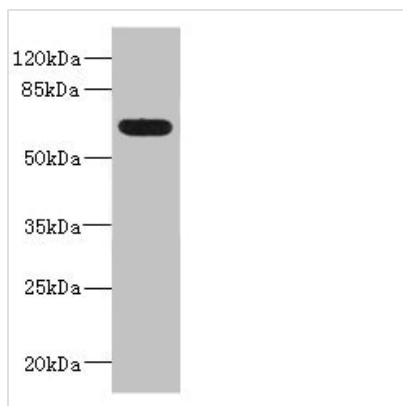




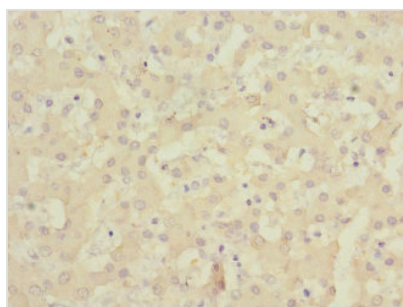
# ALCAM Antibody

<b>Product Code</b>	CSB-PA614444ESR2HU
<b>Storage</b>	Upon receipt, store at -20°C or -80°C. Avoid repeated freeze.
<b>Uniprot No.</b>	Q13740
<b>Immunogen</b>	Recombinant Human CD166 antigen protein (28-180AA)
<b>Raised In</b>	Rabbit
<b>Species Reactivity</b>	Human, Mouse
<b>Tested Applications</b>	ELISA, WB, IHC; Recommended dilution: WB:1:1000-1:5000, IHC:1:20-1:200
<b>Form</b>	Liquid
<b>Conjugate</b>	Non-conjugated
<b>Storage Buffer</b>	PBS with 0.02% sodium azide, 50% glycerol, pH7.3.
<b>Purification Method</b>	Antigen Affinity Purified
<b>Isotype</b>	IgG
<b>Clonality</b>	Polyclonal
<b>Alias</b>	CD166 antigen (Activated leukocyte cell adhesion molecule) (CD antigen CD166), ALCAM, MEMD
<b>Immunogen Species</b>	Homo sapiens (Human)
<b>Research Area</b>	Immunology
<b>Target Names</b>	ALCAM

## Image



Western blot  
 All lanes: ALCAM antibody IgG at 5.36µg/ml +  
 Mouse kidney tissue  
 Secondary  
 Goat polyclonal to rabbit IgG at 1/10000 dilution  
 Predicted band size: 66, 64, 16, 34 kDa  
 Observed band size: 66 kDa



Immunohistochemistry of paraffin-embedded  
 human liver tissue using CSB-  
 PA614444ESR2HU at dilution of 1:100



---

**Usage**

For Research Use Only. Not for use in diagnostic or therapeutic procedures.