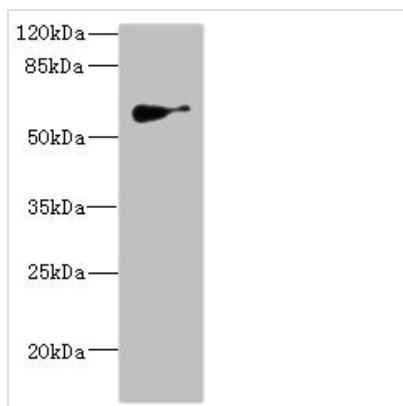




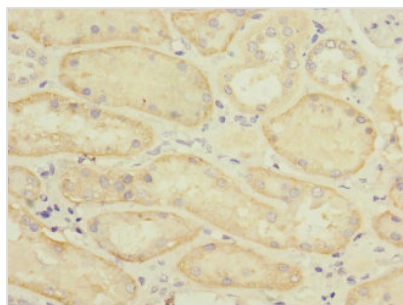
# SLC22A8 Antibody

<b>Product Code</b>	CSB-PA855047ESR2HU
<b>Storage</b>	Upon receipt, store at -20°C or -80°C. Avoid repeated freeze.
<b>Uniprot No.</b>	Q8TCC7
<b>Immunogen</b>	Recombinant Human Solute carrier family 22 member 8 protein (473-542AA)
<b>Raised In</b>	Rabbit
<b>Species Reactivity</b>	Human, Mouse
<b>Tested Applications</b>	ELISA, WB, IHC; Recommended dilution: WB:1:1000-1:5000, IHC:1:20-1:200
<b>Form</b>	Liquid
<b>Conjugate</b>	Non-conjugated
<b>Storage Buffer</b>	PBS with 0.02% sodium azide, 50% glycerol, pH7.3.
<b>Purification Method</b>	Antigen Affinity Purified
<b>Isotype</b>	IgG
<b>Clonality</b>	Polyclonal
<b>Alias</b>	Solute carrier family 22 member 8 (Organic anion transporter 3) (hOAT3), SLC22A8, OAT3
<b>Immunogen Species</b>	Homo sapiens (Human)
<b>Research Area</b>	Signal Transduction
<b>Target Names</b>	SLC22A8

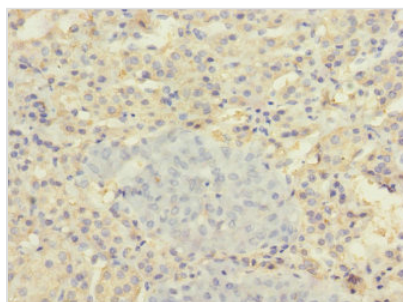
## Image



Western blot  
All lanes: SLC22A8 antibody IgG at 1.62μg/ml +  
Mouse kidney tissue  
Secondary  
Goat polyclonal to rabbit IgG at 1/10000 dilution  
Predicted band size: 60, 61, 47, 12, 50 kDa  
Observed band size: 60 kDa



Immunohistochemistry of paraffin-embedded  
human kidney tissue using CSB-  
PA855047ESR2HU at dilution of 1:100



Immunohistochemistry of paraffin-embedded human adrenal gland tissue using CSB-PA855047ESR2HU at dilution of 1:100