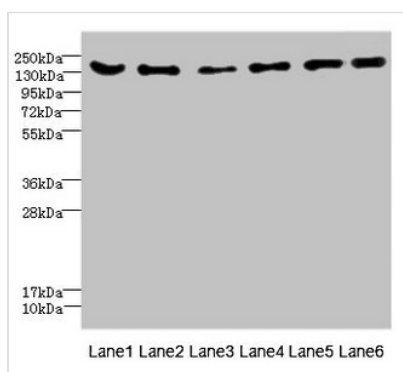




ADGRG6 Antibody

Product Code	CSB-PA768200ESR1HU
Storage	Upon receipt, store at -20°C or -80°C. Avoid repeated freeze.
Uniprot No.	Q86SQ4
Immunogen	Recombinant Human Adhesion G-protein coupled receptor G6 protein (40-300AA)
Raised In	Rabbit
Species Reactivity	Human, Mouse
Tested Applications	ELISA, WB, IHC; Recommended dilution: WB:1:1000-1:5000, IHC:1:20-1:200
Form	Liquid
Conjugate	Non-conjugated
Storage Buffer	PBS with 0.02% sodium azide, 50% glycerol, pH7.3.
Purification Method	Antigen Affinity Purified
Isotype	IgG
Clonality	Polyclonal
Alias	Adhesion G-protein coupled receptor G6 (Developmentally regulated G-protein-coupled receptor) (G-protein coupled receptor 126) (Vascular inducible G protein-coupled receptor) [Cleaved into: ADGRG6 N-terminal fragment (ADGRG6-NTF); ADGRG6 C-terminal fragment (ADGRG6-CTF)], ADGRG6, DREG GPR126 VIGR
Immunogen Species	Homo sapiens (Human)
Research Area	Signal Transduction
Target Names	ADGRG6

Image



Western blot

All lanes: CD1C antibody at 4.61µg/ml

Lane 1: Mouse brain tissue

Lane 2: Mouse lung tissue

Lane 3: 293T whole cell lysate

Lane 4: HepG2 whole cell lysate

Lane 5: Jurkat whole cell lysate

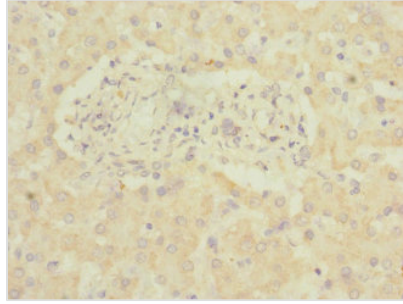
Lane 6: Hela whole cell lysate

Secondary

Goat polyclonal to rabbit IgG at 1/10000 dilution

Predicted band size: 137, 134, 140 kDa

Observed band size: 137 kDa



Immunohistochemistry of paraffin-embedded human liver tissue using CSB-PA768200ESR1HU at dilution of 1:100

Usage

For Research Use Only. Not for use in diagnostic or therapeutic procedures.