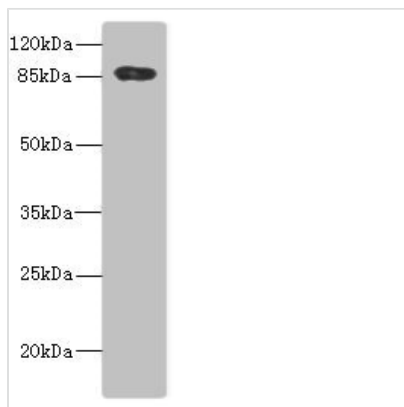




ADAM28 Antibody

Product Code	CSB-PA892455ESR1HU
Storage	Upon receipt, store at -20°C or -80°C. Avoid repeated freeze.
Uniprot No.	Q9UKQ2
Immunogen	Recombinant Human Disintegrin and metalloproteinase domain-containing protein 28 protein (199-440AA)
Raised In	Rabbit
Species Reactivity	Human
Tested Applications	ELISA, WB, IHC; Recommended dilution: WB:1:1000-1:5000, IHC:1:20-1:200
Form	Liquid
Conjugate	Non-conjugated
Storage Buffer	PBS with 0.02% sodium azide, 50% glycerol, pH7.3.
Purification Method	Antigen Affinity Purified
Isotype	IgG
Clonality	Polyclonal
Alias	Disintegrin and metalloproteinase domain-containing protein 28 (ADAM 28) (EC 3.4.24.-) (Epididymal metalloproteinase-like, disintegrin-like, and cysteine-rich protein II) (eMDC II) (Metalloproteinase-like, disintegrin-like, and cysteine-rich protein L) (MDC-L), ADAM28, ADAM23 MDCL
Immunogen Species	Homo sapiens (Human)
Research Area	Signal Transduction
Target Names	ADAM28

Image



Western blot

All lanes: ADAM28 antibody IgG at 5.6µg/ml +

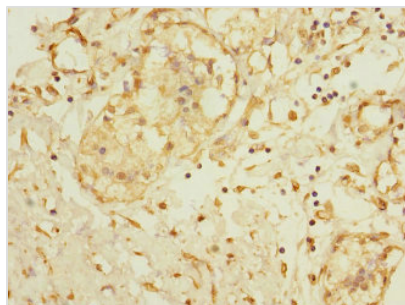
PC-3 whole cell lysate

Secondary

Goat polyclonal to rabbit IgG at 1/10000 dilution

Predicted band size: 88, 62 kDa

Observed band size: 88 kDa



Immunohistochemistry of paraffin-embedded human breast cancer using CSB-PA892455ESR1HU at dilution of 1:100

Usage

For Research Use Only. Not for use in diagnostic or therapeutic procedures.