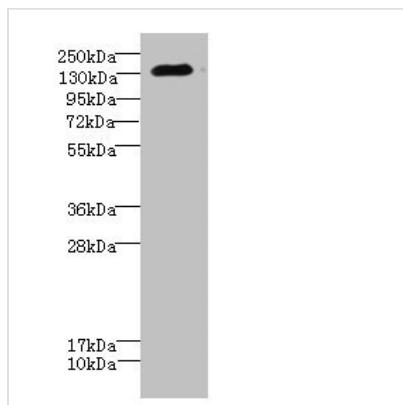




# CACNA2D2 Antibody

<b>Product Code</b>	CSB-PA889145ESR2HU
<b>Storage</b>	Upon receipt, store at -20°C or -80°C. Avoid repeated freeze.
<b>Uniprot No.</b>	Q9NY47
<b>Immunogen</b>	Recombinant Human Voltage-dependent calcium channel subunit alpha-2/delta-2 protein (20-200AA)
<b>Raised In</b>	Rabbit
<b>Species Reactivity</b>	Human, Mouse
<b>Tested Applications</b>	ELISA, WB, IHC; Recommended dilution: WB:1:1000-1:5000, IHC:1:20-1:200
<b>Form</b>	Liquid
<b>Conjugate</b>	Non-conjugated
<b>Storage Buffer</b>	PBS with 0.02% sodium azide, 50% glycerol, pH7.3.
<b>Purification Method</b>	Antigen Affinity Purified
<b>Isotype</b>	IgG
<b>Clonality</b>	Polyclonal
<b>Alias</b>	Voltage-dependent calcium channel subunit alpha-2/delta-2 (Voltage-gated calcium channel subunit alpha-2/delta-2) [Cleaved into: Voltage-dependent calcium channel subunit alpha-2-2; Voltage-dependent calcium channel subunit delta-2], CACNA2D2, KIAA0558
<b>Immunogen Species</b>	Homo sapiens (Human)
<b>Research Area</b>	Cell Biology
<b>Target Names</b>	CACNA2D2

## Image



### Western blot

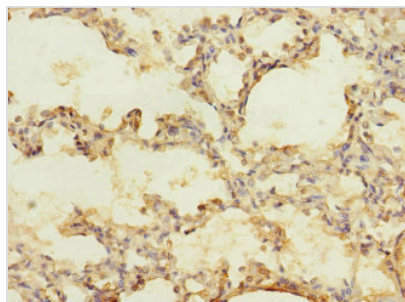
All lanes: CACNA2D2 antibody IgG at 4.51µg/ml + Mouse brain tissue

### Secondary

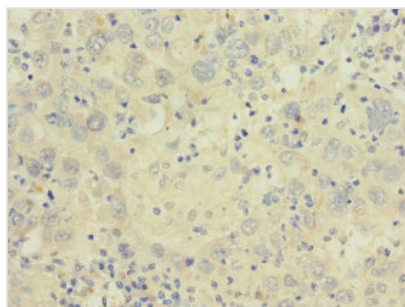
Goat polyclonal to rabbit IgG at 1/10000 dilution

Predicted band size: 130, 123, 131 kDa

Observed band size: 130 kDa



Immunohistochemistry of paraffin-embedded human lung tissue using CSB-PA889145ESR2HU at dilution of 1:100



Immunohistochemistry of paraffin-embedded human liver cancer using CSB-PA889145ESR2HU at dilution of 1:100

## Usage

For Research Use Only. Not for use in diagnostic or therapeutic procedures.