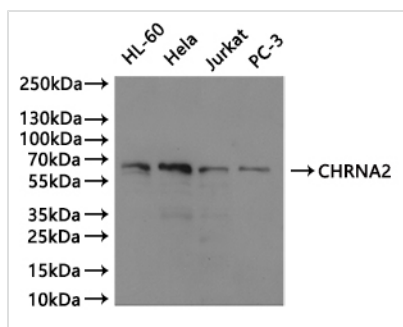




# CHRNA2 Antibody

<b>Product Code</b>	CSB-PA621886ESR1HU
<b>Storage</b>	Upon receipt, store at -20°C or -80°C. Avoid repeated freeze.
<b>Uniprot No.</b>	Q15822
<b>Immunogen</b>	Recombinant Human Neuronal acetylcholine receptor subunit alpha-2 protein (27-264AA)
<b>Raised In</b>	Rabbit
<b>Species Reactivity</b>	Human
<b>Tested Applications</b>	ELISA, WB, IHC, IF; Recommended dilution: WB:1:1000-1:5000, IHC:1:20-1:200, IF:1:20-1:200
<b>Form</b>	Liquid
<b>Conjugate</b>	Non-conjugated
<b>Storage Buffer</b>	Preservative: 0.03% Proclin 300 Constituents: 50% Glycerol, 0.01M PBS, PH 7.4
<b>Purification Method</b>	Antigen Affinity Purified
<b>Isotype</b>	IgG
<b>Clonality</b>	Polyclonal
<b>Product Type</b>	Polyclonal Antibody
<b>Immunogen Species</b>	Homo sapiens (Human)
<b>Research Area</b>	Neuroscience
<b>Target Names</b>	CHRNA2

## Image



### Western Blot

Positive WB detected in: HL-60 whole cell lysate(20µg), HeLa whole cell lysate(20µg), Jurkat whole cell lysate(20µg), PC-3 whole cell lysate(20µg)

All lanes: CHRNA2 antibody at 1:1000

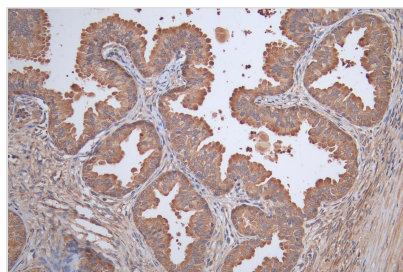
Secondary

Goat polyclonal to rabbit IgG at 1/40000 dilution

Predicted band size: 59 kDa

Observed band size: 60 kDa

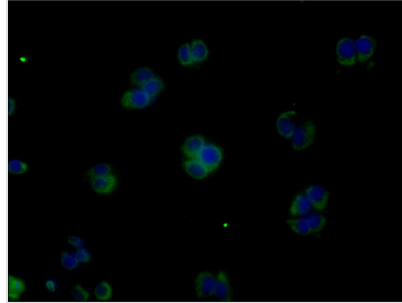
Exposure time: 300s



Immunohistochemistry image of CSB-PA621886ESR1HU diluted at 1:50 and staining in paraffin-embedded human prostate tissue performed on a Leica Bond™ system. After dewaxing and hydration, antigen retrieval was mediated by high pressure in a citrate buffer (pH 6.0). Section was blocked with 10% normal goat serum 30min at RT. Then primary antibody (1% BSA) was incubated at 4°C overnight. The



primary is detected by a Goat anti-rabbit polymer IgG labeled by HRP and visualized using 0.05% DAB.



Immunofluorescence staining of PC-3 cell with CSB-PA621886ESR1HU at 1:25, counter-stained with DAPI. The cells were fixed in 4% formaldehyde and permeated by 0.2% TritonX-100 for 15 min. Then 10% normal goat serum to block non-specific protein-protein interactions. The cells were then incubated with the antibody overnight at 4°. The secondary antibody was Alexa Fluor 488-conjugated AffiniPure Goat Anti-Rabbit IgG(H+L).

## Usage

For Research Use Only. Not for use in diagnostic or therapeutic procedures.