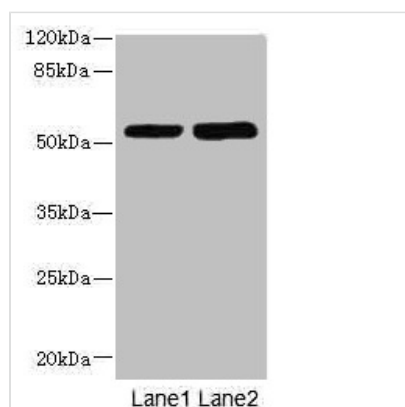




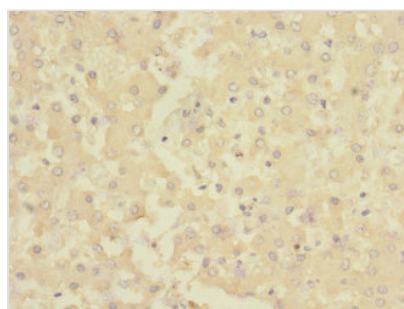
CHRNE Antibody

Product Code	CSB-PA005400ESR1HU
Storage	Upon receipt, store at -20°C or -80°C. Avoid repeated freeze.
Uniprot No.	Q04844
Immunogen	Recombinant Human Acetylcholine receptor subunit epsilon protein (21-239AA)
Raised In	Rabbit
Species Reactivity	Human
Tested Applications	ELISA, WB, IHC; Recommended dilution: WB:1:1000-1:5000, IHC:1:20-1:200
Form	Liquid
Conjugate	Non-conjugated
Storage Buffer	PBS with 0.02% sodium azide, 50% glycerol, pH7.3.
Purification Method	Antigen Affinity Purified
Isotype	IgG
Clonality	Polyclonal
Alias	Acetylcholine receptor subunit epsilon, CHRNE, ACHRE
Immunogen Species	Homo sapiens (Human)
Research Area	Neuroscience
Target Names	CHRNE

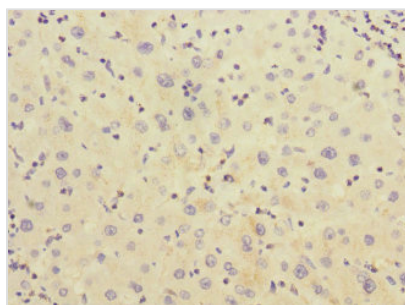
Image



Western blot
All lanes: CHRNE antibody at 1.87µg/ml
Lane 1: Hela whole cell lysate
Lane 2: HepG2 whole cell lysate
Secondary
Goat polyclonal to rabbit IgG at 1/10000 dilution
Predicted band size: 55 kDa
Observed band size: 55 kDa



Immunohistochemistry of paraffin-embedded human liver tissue using CSB-PA005400ESR1HU at dilution of 1:100



Immunohistochemistry of paraffin-embedded human liver cancer using CSB-PA005400ESR1HU at dilution of 1:100