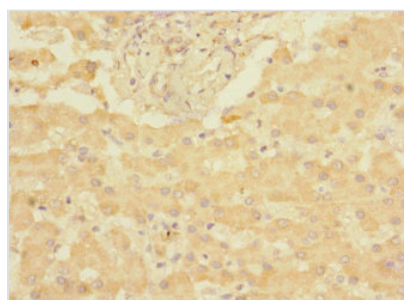




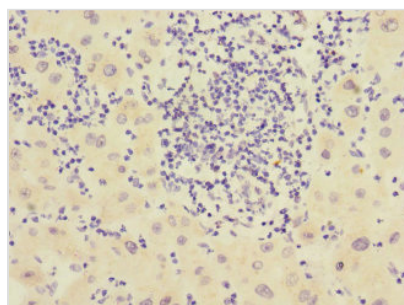
CHRNE Antibody

Product Code	CSB-PA005400ESR2HU
Storage	Upon receipt, store at -20°C or -80°C. Avoid repeated freeze.
Uniprot No.	Q04844
Immunogen	Recombinant Human Acetylcholine receptor subunit epsilon protein (21-239AA)
Raised In	Rabbit
Species Reactivity	Human
Tested Applications	ELISA, IHC; Recommended dilution: IHC:1:20-1:200
Form	Liquid
Conjugate	Non-conjugated
Storage Buffer	PBS with 0.02% sodium azide, 50% glycerol, pH7.3.
Purification Method	Antigen Affinity Purified
Isotype	IgG
Clonality	Polyclonal
Alias	Acetylcholine receptor subunit epsilon, CHRNE, ACHRE
Immunogen Species	Homo sapiens (Human)
Research Area	Neuroscience
Target Names	CHRNE

Image



Immunohistochemistry of paraffin-embedded human liver tissue using CSB-PA005400ESR2HU at dilution of 1:100



Immunohistochemistry of paraffin-embedded human liver cancer using CSB-PA005400ESR2HU at dilution of 1:100

Usage For Research Use Only. Not for use in diagnostic or therapeutic procedures.