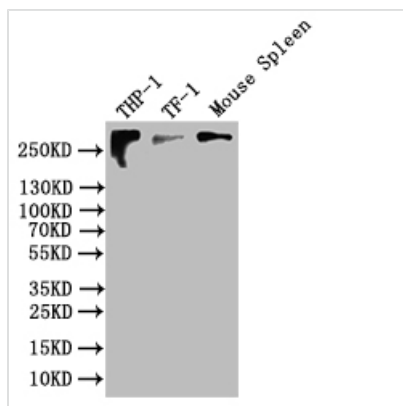




CR1 Antibody

Product Code	CSB-PA822164ESR1HU
Storage	Upon receipt, store at -20°C or -80°C. Avoid repeated freeze.
Uniprot No.	P17927
Immunogen	Recombinant Human Complement receptor type 1 protein (420-550AA)
Raised In	Rabbit
Species Reactivity	Human, Mouse
Tested Applications	ELISA, WB, IHC, IF; Recommended dilution: WB:1:1000-1:5000, IHC:1:20-1:200, IF:1:20-1:200
Form	Liquid
Conjugate	Non-conjugated
Storage Buffer	PBS with 0.02% sodium azide, 50% glycerol, pH7.3.
Purification Method	Antigen Affinity Purified
Isotype	IgG
Clonality	Polyclonal
Product Type	Polyclonal Antibody
Immunogen Species	Homo sapiens (Human)
Research Area	Immunology
Target Names	CR1

Image



Western Blot

Positive WB detected in: THP-1 whole cell lysate, TF-1 whole cell lysate, Mouse Spleen tissue lysate

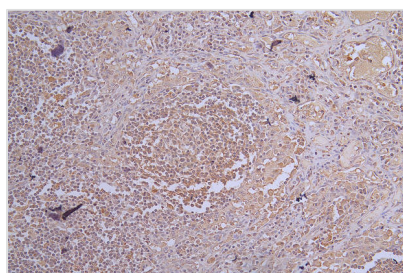
All lanes: CR1 antibody at 1:500

Secondary

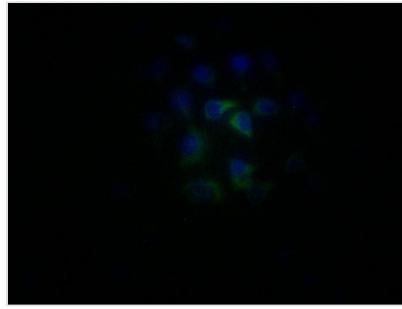
Goat polyclonal to rabbit IgG at 1/50000 dilution

Predicted band size: 224/270 kDa

Observed band size: 270 kDa



Immunohistochemistry of paraffin-embedded human lymph node tissue using CSB-PA822164ESR1HU at dilution of 1:100



Immunofluorescence staining of MCF-7 cells with CSB-PA822164ESR1HU at 1:25, counterstained with DAPI. The cells were fixed in 4% formaldehyde, permeabilized using 0.2% Triton X-100 and blocked in 10% normal Goat Serum. The cells were then incubated with the antibody overnight at 4°C. The secondary antibody was Alexa Fluor 488-conjugated AffiniPure Goat Anti-Rabbit IgG(H+L).

Usage

For Research Use Only. Not for use in diagnostic or therapeutic procedures.