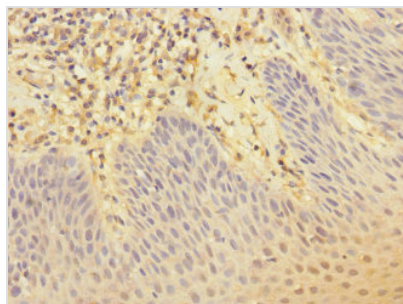




CR1 Antibody

Product Code	CSB-PA822164ESR2HU
Storage	Upon receipt, store at -20°C or -80°C. Avoid repeated freeze.
Uniprot No.	P17927
Immunogen	Recombinant Human Complement receptor type 1 protein (420-550AA)
Raised In	Rabbit
Species Reactivity	Human
Tested Applications	ELISA, IHC; Recommended dilution: IHC:1:20-1:200
Form	Liquid
Conjugate	Non-conjugated
Storage Buffer	PBS with 0.02% sodium azide, 50% glycerol, pH7.3.
Purification Method	Antigen Affinity Purified
Isotype	IgG
Clonality	Polyclonal
Alias	Complement receptor type 1 (C3b/C4b receptor) (CD antigen CD35), CR1, C3BR
Immunogen Species	Homo sapiens (Human)
Research Area	Immunology
Target Names	CR1

Image



Immunohistochemistry of paraffin-embedded human tonsil tissue using CSB-PA822164ESR2HU at dilution of 1:100