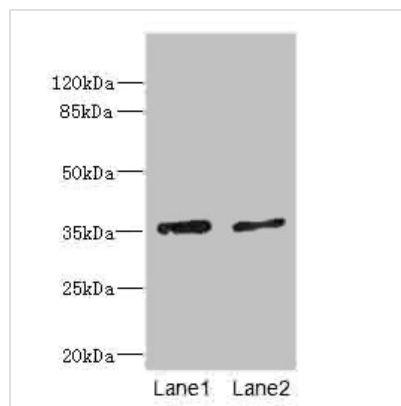




# EFNB3 Antibody

<b>Product Code</b>	CSB-PA007467ESR1HU
<b>Storage</b>	Upon receipt, store at -20°C or -80°C. Avoid repeated freeze.
<b>Uniprot No.</b>	Q15768
<b>Immunogen</b>	Recombinant Human Ephrin-B3 protein (28-226AA)
<b>Raised In</b>	Rabbit
<b>Species Reactivity</b>	Human
<b>Tested Applications</b>	ELISA, WB, IHC; Recommended dilution: WB:1:1000-1:5000, IHC:1:20-1:200
<b>Form</b>	Liquid
<b>Conjugate</b>	Non-conjugated
<b>Storage Buffer</b>	PBS with 0.02% sodium azide, 50% glycerol, pH7.3.
<b>Purification Method</b>	Antigen Affinity Purified
<b>Isotype</b>	IgG
<b>Clonality</b>	Polyclonal
<b>Alias</b>	Ephrin-B3 (EPH-related receptor transmembrane ligand ELK-L3) (EPH-related receptor tyrosine kinase ligand 8) (LERK-8), EFNB3, EPLG8 LERK8
<b>Immunogen Species</b>	Homo sapiens (Human)
<b>Research Area</b>	Cardiovascular
<b>Target Names</b>	EFNB3

## Image



### Western blot

All lanes: EFNB3 antibody at 1.44µg/ml

Lane 1: HepG2 whole cell lysate

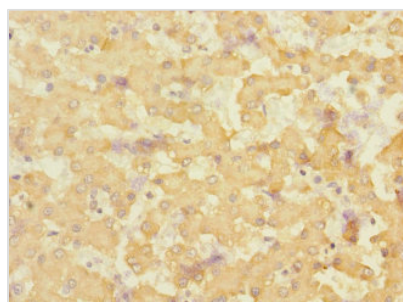
Lane 2: Hela whole cell lysate

Secondary

Goat polyclonal to rabbit IgG at 1/10000 dilution

Predicted band size: 36 kDa

Observed band size: 36 kDa



Immunohistochemistry of paraffin-embedded

human liver tissue using CSB-

PA007467ESR1HU at dilution of 1:100



---

**Usage**

For Research Use Only. Not for use in diagnostic or therapeutic procedures.