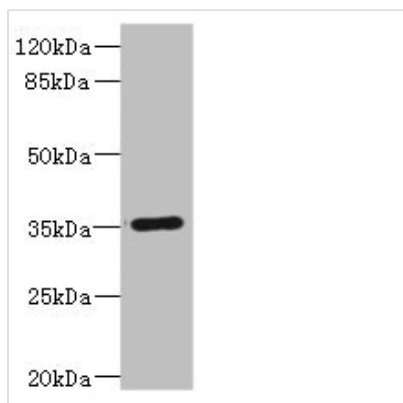




# FCGR2C Antibody

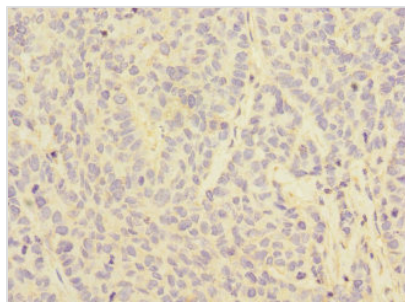
<b>Product Code</b>	CSB-PA008542ESR2HU
<b>Storage</b>	Upon receipt, store at -20°C or -80°C. Avoid repeated freeze.
<b>Uniprot No.</b>	P31995
<b>Immunogen</b>	Recombinant Human Low affinity immunoglobulin gamma Fc region receptor II-c protein (43-223AA)
<b>Raised In</b>	Rabbit
<b>Species Reactivity</b>	Human
<b>Tested Applications</b>	ELISA, WB, IHC; Recommended dilution: WB:1:1000-1:5000, IHC:1:20-1:200
<b>Form</b>	Liquid
<b>Conjugate</b>	Non-conjugated
<b>Storage Buffer</b>	PBS with 0.02% sodium azide, 50% glycerol, pH7.3.
<b>Purification Method</b>	Antigen Affinity Purified
<b>Isotype</b>	IgG
<b>Clonality</b>	Polyclonal
<b>Alias</b>	Low affinity immunoglobulin gamma Fc region receptor II-c (IgG Fc receptor II-c) (CDw32) (Fc-gamma RII-c) (Fc-gamma-RIIc) (FcRII-c) (CD antigen CD32), FCGR2C, CD32 FCG2 IGFR2
<b>Immunogen Species</b>	Homo sapiens (Human)
<b>Research Area</b>	Immunology
<b>Target Names</b>	FCGR2C

## Image

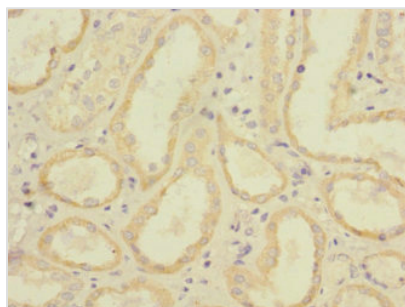


Western blot

All lanes: FCGR2C antibody IgG at 1.67µg/ml + Human Burkitt lymphoma cells  
 Secondary  
 Goat polyclonal to rabbit IgG at 1/10000 dilution  
 Predicted band size: 36, 31, 30, 26 kDa  
 Observed band size: 36 kDa



Immunohistochemistry of paraffin-embedded human ovarian cancer using CSB-PA008542ESR2HU at dilution of 1:100



Immunohistochemistry of paraffin-embedded human kidney tissue using CSB-PA008542ESR2HU at dilution of 1:100