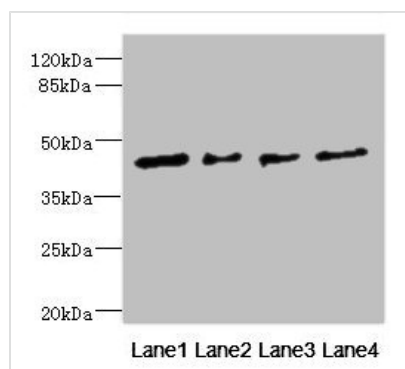




# FCRL6 Antibody

<b>Product Code</b>	CSB-PA718779ESR2HU
<b>Storage</b>	Upon receipt, store at -20°C or -80°C. Avoid repeated freeze.
<b>Uniprot No.</b>	Q6DN72
<b>Immunogen</b>	Recombinant Human Fc receptor-like protein 6 protein (20-307AA)
<b>Raised In</b>	Rabbit
<b>Species Reactivity</b>	Human
<b>Tested Applications</b>	ELISA, WB, IHC; Recommended dilution: WB:1:1000-1:5000, IHC:1:20-1:200
<b>Form</b>	Liquid
<b>Conjugate</b>	Non-conjugated
<b>Storage Buffer</b>	PBS with 0.02% sodium azide, 50% glycerol, pH7.3.
<b>Purification Method</b>	Antigen Affinity Purified
<b>Isotype</b>	IgG
<b>Clonality</b>	Polyclonal
<b>Alias</b>	Fc receptor-like protein 6 (FcR-like protein 6) (FcRL6) (Fc receptor homolog 6) (FcRH6) (IFGP6), FCRL6, FCRH6
<b>Immunogen Species</b>	Homo sapiens (Human)
<b>Research Area</b>	Immunology
<b>Target Names</b>	FCRL6

## Image



### Western blot

All lanes: FCRL6 antibody at 1.29µg/ml

Lane 1: Hela whole cell lysate

Lane 2: A549 whole cell lysate

Lane 3: Jurkat whole cell lysate

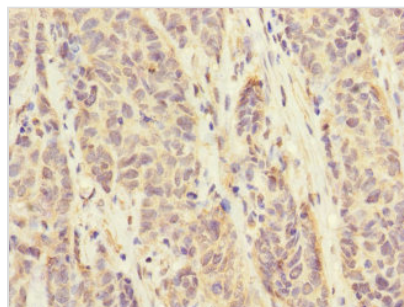
Lane 4: HepG2 whole cell lysate

### Secondary

Goat polyclonal to rabbit IgG at 1/10000 dilution

Predicted band size: 48, 46, 44, 35 kDa

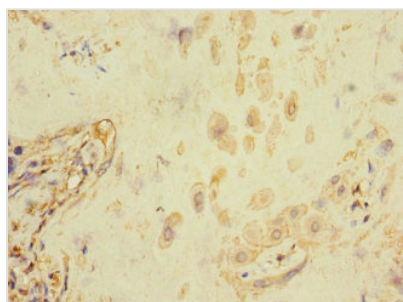
Observed band size: 48 kDa



### Immunohistochemistry of paraffin-embedded

human ovarian cancer using CSB-

PA718779ESR2HU at dilution of 1:100



Immunohistochemistry of paraffin-embedded human placenta tissue using CSB-PA718779ESR2HU at dilution of 1:100