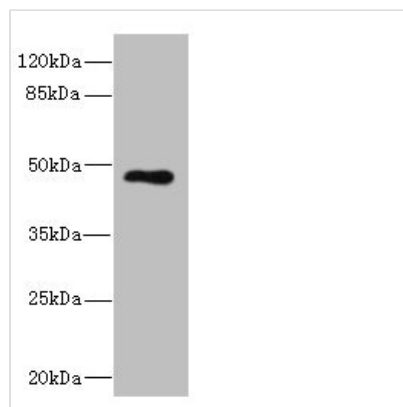




KIR3DL3 Antibody

Product Code	CSB-PA850818ESR1HU
Storage	Upon receipt, store at -20°C or -80°C. Avoid repeated freeze.
Uniprot No.	Q8N743
Immunogen	Recombinant Human Killer cell immunoglobulin-like receptor 3DL3 protein (26-322AA)
Raised In	Rabbit
Species Reactivity	Human
Tested Applications	ELISA, WB, IHC; Recommended dilution: WB:1:1000-1:5000, IHC:1:20-1:200
Form	Liquid
Conjugate	Non-conjugated
Storage Buffer	PBS with 0.02% sodium azide, 50% glycerol, pH7.3.
Purification Method	Antigen Affinity Purified
Isotype	IgG
Clonality	Polyclonal
Alias	Killer cell immunoglobulin-like receptor 3DL3 (CD158 antigen-like family member Z) (Killer cell inhibitory receptor 1) (CD antigen CD158z), KIR3DL3, CD158Z KIR3DL7 KIRC1
Immunogen Species	Homo sapiens (Human)
Research Area	Immunology
Target Names	KIR3DL3

Image



Western blot

All lanes: KIR3DL3 antibody at 1.75µg/ml +

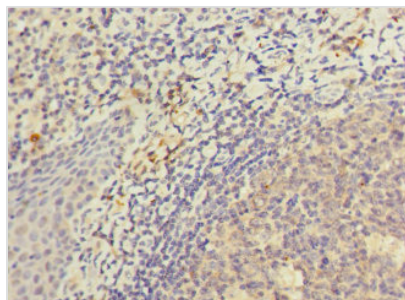
Jurkat whole cell lysate

Secondary

Goat polyclonal to rabbit IgG at 1/10000 dilution

Predicted band size: 45 kDa

Observed band size: 45 kDa



Immunohistochemistry of paraffin-embedded human tonsil tissue using CSB-PA850818ESR1HU at dilution of 1:100

Usage

For Research Use Only. Not for use in diagnostic or therapeutic procedures.