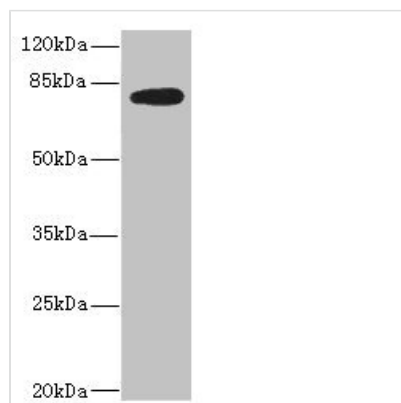




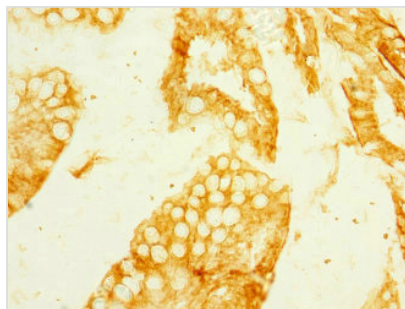
MEP1B Antibody

Product Code	CSB-PA618098ESR1HU
Storage	Upon receipt, store at -20°C or -80°C. Avoid repeated freeze.
Uniprot No.	Q16820
Immunogen	Recombinant Human Meprin A subunit beta protein (480-652AA)
Raised In	Rabbit
Species Reactivity	Human, Mouse
Tested Applications	ELISA, WB, IHC; Recommended dilution: WB:1:1000-1:5000, IHC:1:20-1:200
Form	Liquid
Conjugate	Non-conjugated
Storage Buffer	PBS with 0.02% sodium azide, 50% glycerol, pH7.3.
Purification Method	Antigen Affinity Purified
Isotype	IgG
Clonality	Polyclonal
Alias	Meprin A subunit beta (EC 3.4.24.63) (Endopeptidase-2) (Meprin B) (N-benzoyl-L-tyrosyl-P-amino-benzoic acid hydrolase subunit beta) (PABA peptide hydrolase) (PPH beta), MEP1B
Immunogen Species	Homo sapiens (Human)
Research Area	Cell Biology
Target Names	MEP1B

Image



Western blot
 All lanes: MEP1B antibody IgG at 2.36µg/ml +
 Mouse kidney tissue
 Secondary
 Goat polyclonal to rabbit IgG at 1/10000 dilution
 Predicted band size: 80 kDa
 Observed band size: 80 kDa



Immunohistochemistry of paraffin-embedded human small intestine tissue using CSB-PA618098ESR1HU at dilution of 1:100

Usage

For Research Use Only. Not for use in diagnostic or therapeutic procedures.