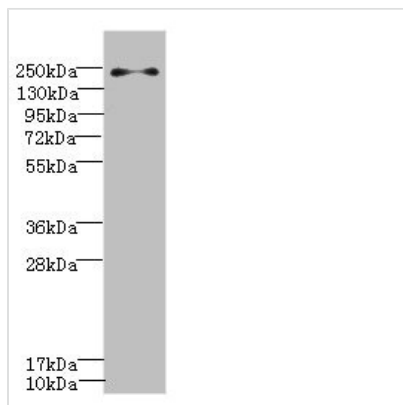




# PLA2R1 Antibody

<b>Product Code</b>	CSB-PA623780ESR1HU
<b>Storage</b>	Upon receipt, store at -20°C or -80°C. Avoid repeated freeze.
<b>Uniprot No.</b>	Q13018
<b>Immunogen</b>	Recombinant Human Secretory phospholipase A2 receptor protein (870-1130AA)
<b>Raised In</b>	Rabbit
<b>Species Reactivity</b>	Human
<b>Tested Applications</b>	ELISA, WB; Recommended dilution: WB:1:1000-1:5000
<b>Form</b>	Liquid
<b>Conjugate</b>	Non-conjugated
<b>Storage Buffer</b>	PBS with 0.02% sodium azide, 50% glycerol, pH7.3.
<b>Purification Method</b>	Antigen Affinity Purified
<b>Isotype</b>	IgG
<b>Clonality</b>	Polyclonal
<b>Alias</b>	Secretory phospholipase A2 receptor (PLA2-R) (PLA2R) (180 kDa secretory phospholipase A2 receptor) (C-type lectin domain family 13 member C) (M-type receptor) [Cleaved into: Soluble secretory phospholipase A2 receptor (Soluble PLA2-R) (Soluble PLA2R)], PLA2R1, CLEC13C
<b>Immunogen Species</b>	Homo sapiens (Human)
<b>Research Area</b>	Cardiovascular
<b>Target Names</b>	PLA2R1

## Image



### Western blot

All lanes: PLA2R1 antibody IgG at 0.78µg/ml + Jurkat whole cell lysate  
 Secondary  
 Goat polyclonal to rabbit IgG at 1/10000 dilution  
 Predicted band size: 169, 153 kDa  
 Observed band size: 169 kDa

## Usage

For Research Use Only. Not for use in diagnostic or therapeutic procedures.