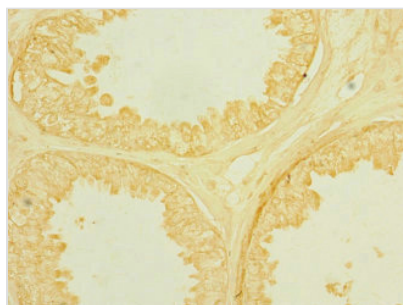




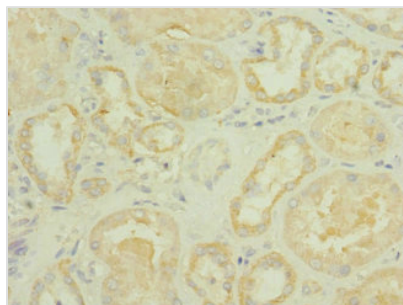
ROBO2 Antibody

Product Code	CSB-PA888028ESR2HU
Storage	Upon receipt, store at -20°C or -80°C. Avoid repeated freeze.
Uniprot No.	Q9HCK4
Immunogen	Recombinant Human Roundabout homolog 2 protein (450-660AA)
Raised In	Rabbit
Species Reactivity	Human
Tested Applications	ELISA, IHC; Recommended dilution: IHC:1:20-1:200
Form	Liquid
Conjugate	Non-conjugated
Storage Buffer	PBS with 0.02% sodium azide, 50% glycerol, pH7.3.
Purification Method	Antigen Affinity Purified
Isotype	IgG
Clonality	Polyclonal
Alias	Roundabout homolog 2, ROBO2, KIAA1568
Immunogen Species	Homo sapiens (Human)
Research Area	Neuroscience
Target Names	ROBO2

Image



Immunohistochemistry of paraffin-embedded human prostate cancer using CSB-PA888028ESR2HU at dilution of 1:100



Immunohistochemistry of paraffin-embedded human kidney tissue using CSB-PA888028ESR2HU at dilution of 1:100