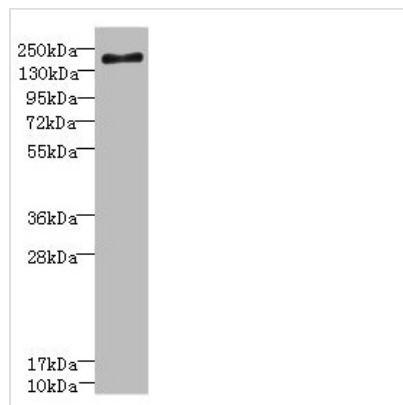




# SCN7A Antibody

<b>Product Code</b>	CSB-PA2108ESR1HU
<b>Storage</b>	Upon receipt, store at -20°C or -80°C. Avoid repeated freeze.
<b>Uniprot No.</b>	Q01118
<b>Immunogen</b>	Recombinant Human Sodium channel protein type 7 subunit alpha protein (265-368AA)
<b>Raised In</b>	Rabbit
<b>Species Reactivity</b>	Human
<b>Tested Applications</b>	ELISA, WB, IHC; Recommended dilution: WB:1:1000-1:5000, IHC:1:20-1:200
<b>Form</b>	Liquid
<b>Conjugate</b>	Non-conjugated
<b>Storage Buffer</b>	PBS with 0.02% sodium azide, 50% glycerol, pH7.3.
<b>Purification Method</b>	Antigen Affinity Purified
<b>Isotype</b>	IgG
<b>Clonality</b>	Polyclonal
<b>Alias</b>	Sodium channel protein type 7 subunit alpha (Putative voltage-gated sodium channel subunit alpha Na <sub>x</sub> ) (Sodium channel protein cardiac and skeletal muscle subunit alpha) (Sodium channel protein type VII subunit alpha), SCN7A, SCN6A
<b>Immunogen Species</b>	Homo sapiens (Human)
<b>Research Area</b>	Neuroscience
<b>Target Names</b>	SCN7A

## Image



### Western blot

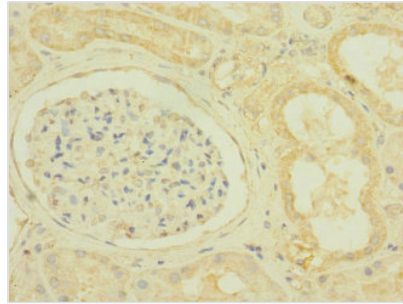
All lanes: SCN7A antibody at 2.36µg/ml + Jurkat whole cell lysate

### Secondary

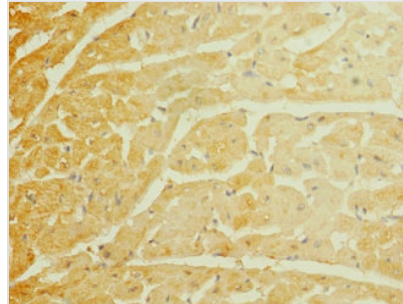
Goat polyclonal to rabbit IgG at 1/10000 dilution

Predicted band size: 194 kDa

Observed band size: 194 kDa



Immunohistochemistry of paraffin-embedded human kidney tissue using CSB-PA2108ESR1HU at dilution of 1:100



Immunohistochemistry of paraffin-embedded human heart tissue using CSB-PA2108ESR1HU at dilution of 1:100

## Usage

For Research Use Only. Not for use in diagnostic or therapeutic procedures.