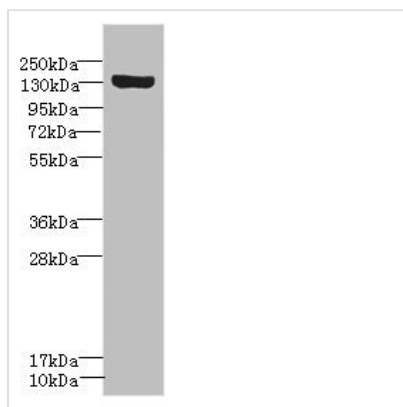




SCN8A Antibody

Product Code	CSB-PA891989ESR2HU
Storage	Upon receipt, store at -20°C or -80°C. Avoid repeated freeze.
Uniprot No.	Q9UQD0
Immunogen	Recombinant Human Sodium channel protein type 8 subunit alpha protein (1350-1440AA)
Raised In	Rabbit
Species Reactivity	Human, Rat
Tested Applications	ELISA, WB, IHC; Recommended dilution: WB:1:1000-1:5000, IHC:1:20-1:200
Form	Liquid
Conjugate	Non-conjugated
Storage Buffer	PBS with 0.02% sodium azide, 50% glycerol, pH7.3.
Purification Method	Antigen Affinity Purified
Isotype	IgG
Clonality	Polyclonal
Alias	Sodium channel protein type 8 subunit alpha (Sodium channel protein type VIII subunit alpha) (Voltage-gated sodium channel subunit alpha Nav1.6), SCN8A, MED
Immunogen Species	Homo sapiens (Human)
Research Area	Neuroscience
Target Names	SCN8A

Image



Western blot

All lanes: SCN8A antibody IgG at 1.18µg/ml +

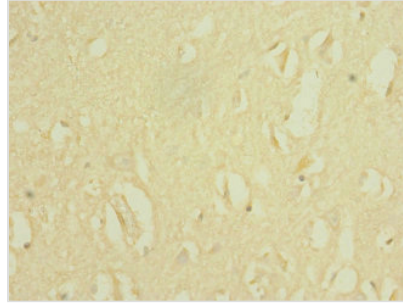
Rat heart tissue

Secondary

Goat polyclonal to rabbit IgG at 1/10000 dilution

Predicted band size: 226, 227, 146, 221 kDa

Observed band size: 226 kDa



Immunohistochemistry of paraffin-embedded human brain tissue using CSB-PA891989ESR2HU at dilution of 1:100

Usage

For Research Use Only. Not for use in diagnostic or therapeutic procedures.