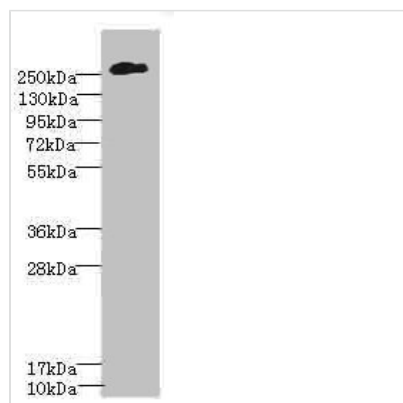




CSPG4 Antibody

Product Code	CSB-PA006076ESR1HU
Storage	Upon receipt, store at -20°C or -80°C. Avoid repeated freeze.
Uniprot No.	Q6UVK1
Immunogen	Recombinant Human Chondroitin sulfate proteoglycan 4 protein (1950-2210AA)
Raised In	Rabbit
Species Reactivity	Human
Tested Applications	ELISA, WB, IHC; Recommended dilution: WB:1:1000-1:5000, IHC:1:20-1:200
Form	Liquid
Conjugate	Non-conjugated
Storage Buffer	PBS with 0.02% sodium azide, 50% glycerol, pH7.3.
Purification Method	Antigen Affinity Purified
Isotype	IgG
Clonality	Polyclonal
Alias	Chondroitin sulfate proteoglycan 4 (Chondroitin sulfate proteoglycan NG2) (Melanoma chondroitin sulfate proteoglycan) (Melanoma-associated chondroitin sulfate proteoglycan), CSPG4, MCSP
Immunogen Species	Homo sapiens (Human)
Research Area	Neuroscience
Target Names	CSPG4

Image



Western blot

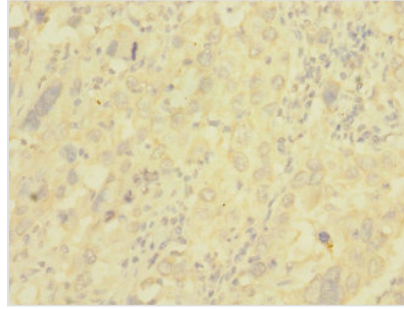
All lanes: CSPG4 antibody at 2.51µg/ml + A375 whole cell lysate

Secondary

Goat polyclonal to rabbit IgG at 1/10000 dilution

Predicted band size: 251 kDa

Observed band size: 251 kDa



Immunohistochemistry of paraffin-embedded human liver cancer using CSB-PA006076ESR1HU at dilution of 1:100

Usage

For Research Use Only. Not for use in diagnostic or therapeutic procedures.