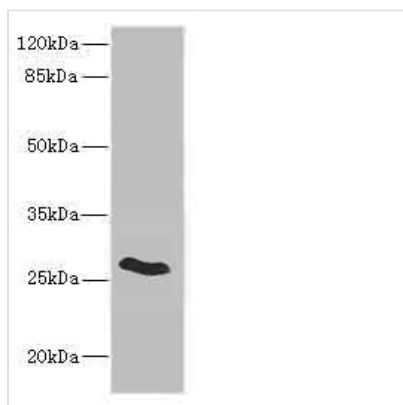




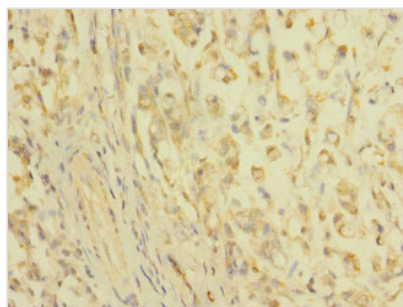
CLDN18 Antibody

| | |
|----------------------------|--|
| Product Code | CSB-PA005498ESR2HU |
| Storage | Upon receipt, store at -20°C or -80°C. Avoid repeated freeze. |
| Uniprot No. | P56856 |
| Immunogen | Recombinant Human Claudin-18 protein (20-80AA) |
| Raised In | Rabbit |
| Species Reactivity | Human, Rat |
| Tested Applications | ELISA, WB, IHC; Recommended dilution: WB:1:1000-1:5000, IHC:1:20-1:200 |
| Form | Liquid |
| Conjugate | Non-conjugated |
| Storage Buffer | PBS with 0.02% sodium azide, 50% glycerol, pH7.3. |
| Purification Method | Antigen Affinity Purified |
| Isotype | IgG |
| Clonality | Polyclonal |
| Alias | Claudin-18, CLDN18 |
| Immunogen Species | Homo sapiens (Human) |
| Research Area | Signal Transduction |
| Target Names | CLDN18 |

Image



Western blot
All lanes: CLDN18 antibody IgG at 5.02μg/ml +
Rat heart tissue
Secondary
Goat polyclonal to rabbit IgG at 1/10000 dilution
Predicted band size: 28 kDa
Observed band size: 28 kDa



Immunohistochemistry of paraffin-embedded
human gastric cancer using CSB-
PA005498ESR2HU at dilution of 1:100