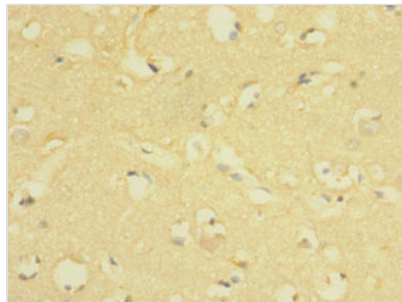




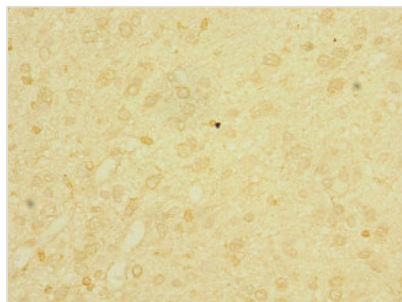
LRIG1 Antibody

| | |
|----------------------------|---|
| Product Code | CSB-PA850317ESR1HU |
| Storage | Upon receipt, store at -20°C or -80°C. Avoid repeated freeze. |
| Uniprot No. | Q96JA1 |
| Immunogen | Recombinant Human Leucine-rich repeats and immunoglobulin-like domains protein 1 protein (35-220AA) |
| Raised In | Rabbit |
| Species Reactivity | Human |
| Tested Applications | ELISA, IHC; Recommended dilution: IHC:1:20-1:200 |
| Form | Liquid |
| Conjugate | Non-conjugated |
| Storage Buffer | PBS with 0.02% sodium azide, 50% glycerol, pH7.3. |
| Purification Method | Antigen Affinity Purified |
| Isotype | IgG |
| Clonality | Polyclonal |
| Alias | Leucine-rich repeats and immunoglobulin-like domains protein 1 (LIG-1), LRIG1, LIG1 |
| Immunogen Species | Homo sapiens (Human) |
| Research Area | Cancer |
| Target Names | LRIG1 |

Image



Immunohistochemistry of paraffin-embedded human brain tissue using CSB-PA850317ESR1HU at dilution of 1:100



Immunohistochemistry of paraffin-embedded human glioma using CSB-PA850317ESR1HU at dilution of 1:100



Usage

For Research Use Only. Not for use in diagnostic or therapeutic procedures.