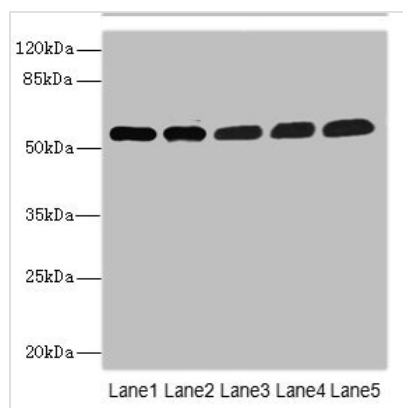




# MPP6 Antibody

<b>Product Code</b>	CSB-PA889164ESR2HU
<b>Storage</b>	Upon receipt, store at -20°C or -80°C. Avoid repeated freeze.
<b>Uniprot No.</b>	Q9NZW5
<b>Immunogen</b>	Recombinant Human MAGUK p55 subfamily member 6 protein (220-420AA)
<b>Raised In</b>	Rabbit
<b>Species Reactivity</b>	Human, Mouse
<b>Tested Applications</b>	ELISA, WB, IHC; Recommended dilution: WB:1:1000-1:5000, IHC:1:20-1:200
<b>Form</b>	Liquid
<b>Conjugate</b>	Non-conjugated
<b>Storage Buffer</b>	PBS with 0.02% sodium azide, 50% glycerol, pH7.3.
<b>Purification Method</b>	Antigen Affinity Purified
<b>Isotype</b>	IgG
<b>Clonality</b>	Polyclonal
<b>Alias</b>	MAGUK p55 subfamily member 6 (Veli-associated MAGUK 1) (VAM-1), MPP6, VAM1
<b>Immunogen Species</b>	Homo sapiens (Human)
<b>Research Area</b>	Cell Biology
<b>Target Names</b>	MPP6

## Image



### Western blot

All lanes: MPP6 antibody at 3.58μg/ml

Lane 1: Mouse brain tissue

Lane 2: Mouse kidney tissue

Lane 3: HepG2 whole cell lysate

Lane 4: Hela whole cell lysate

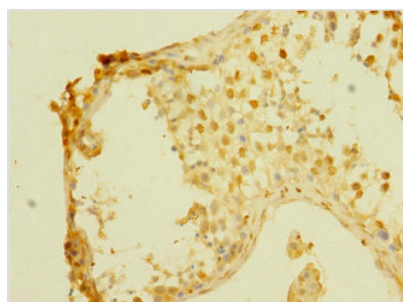
Lane 5: A549 whole cell lysate

### Secondary

Goat polyclonal to rabbit IgG at 1/10000 dilution

Predicted band size: 61 kDa

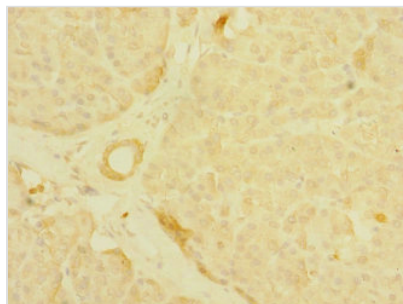
Observed band size: 61 kDa



### Immunohistochemistry of paraffin-embedded

human testis tissue using CSB-

PA889164ESR2HU at dilution of 1:100



Immunohistochemistry of paraffin-embedded human pancreatic tissue using CSB-PA889164ESR2HU at dilution of 1:100