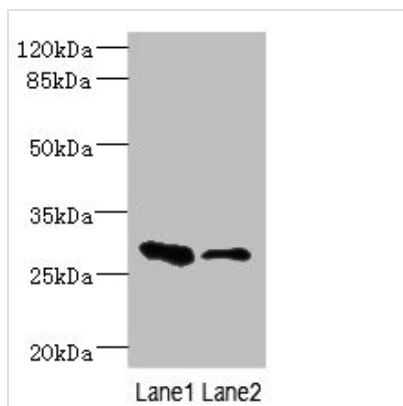




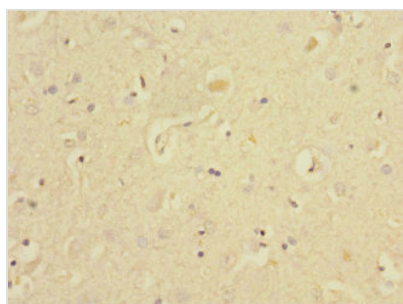
EAF2 Antibody

Product Code	CSB-PA856910DSR1HU
Storage	Upon receipt, store at -20°C or -80°C. Avoid repeated freeze.
Uniprot No.	Q96CJ1
Immunogen	Recombinant Human ELL-associated factor 2 protein (1-170AA)
Raised In	Rabbit
Species Reactivity	Human, Mouse, Rat
Tested Applications	ELISA, WB, IHC; Recommended dilution: WB:1:1000-1:5000, IHC:1:20-1:200
Form	Liquid
Conjugate	Non-conjugated
Storage Buffer	PBS with 0.02% sodium azide, 50% glycerol, pH7.3.
Purification Method	Antigen Affinity Purified
Isotype	IgG
Clonality	Polyclonal
Alias	ELL-associated factor 2 (Testosterone-regulated apoptosis inducer and tumor suppressor protein), EAF2, TRAITS
Immunogen Species	Homo sapiens (Human)
Research Area	Cell Biology
Target Names	EAF2

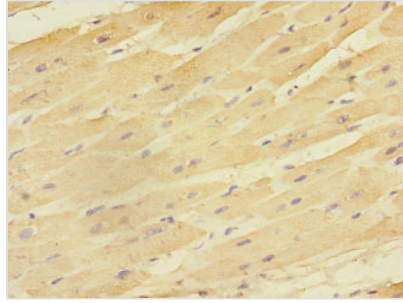
Image



Western blot
 All lanes: EAF2 antibody at 3.6µg/ml
 Lane 1: Rat heart tissue
 Lane 2: Mouse kidney tissue
 Secondary
 Goat polyclonal to rabbit IgG at 1/10000 dilution
 Predicted band size: 29, 15 kDa
 Observed band size: 29 kDa



Immunohistochemistry of paraffin-embedded human brain tissue using CSB-PA856910DSR1HU at dilution of 1:100



Immunohistochemistry of paraffin-embedded human heart tissue using CSB-PA856910DSR1HU at dilution of 1:100

Usage

For Research Use Only. Not for use in diagnostic or therapeutic procedures.