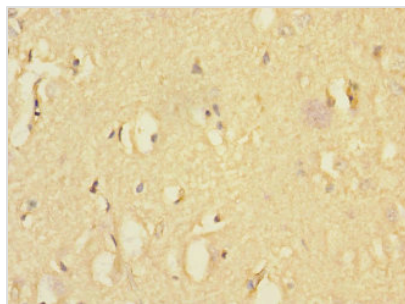




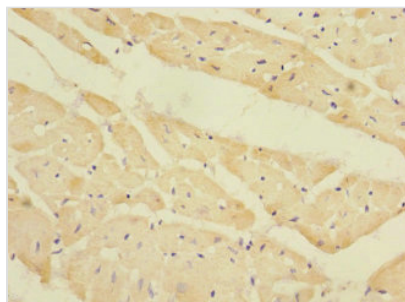
EAF2 Antibody

| | |
|----------------------------|---|
| Product Code | CSB-PA856910DSR2HU |
| Storage | Upon receipt, store at -20°C or -80°C. Avoid repeated freeze. |
| Uniprot No. | Q96CJ1 |
| Immunogen | Recombinant Human ELL-associated factor 2 protein (1-170AA) |
| Raised In | Rabbit |
| Species Reactivity | Human |
| Tested Applications | ELISA, IHC; Recommended dilution: IHC:1:20-1:200 |
| Form | Liquid |
| Conjugate | Non-conjugated |
| Storage Buffer | PBS with 0.02% sodium azide, 50% glycerol, pH7.3. |
| Purification Method | Antigen Affinity Purified |
| Isotype | IgG |
| Clonality | Polyclonal |
| Alias | ELL-associated factor 2 (Testosterone-regulated apoptosis inducer and tumor suppressor protein), EAF2, TRAITS |
| Immunogen Species | Homo sapiens (Human) |
| Research Area | Cell Biology |
| Target Names | EAF2 |

Image



Immunohistochemistry of paraffin-embedded human brain tissue using CSB-PA856910DSR2HU at dilution of 1:100



Immunohistochemistry of paraffin-embedded human heart tissue using CSB-PA856910DSR2HU at dilution of 1:100

Usage

For Research Use Only. Not for use in diagnostic or therapeutic procedures.