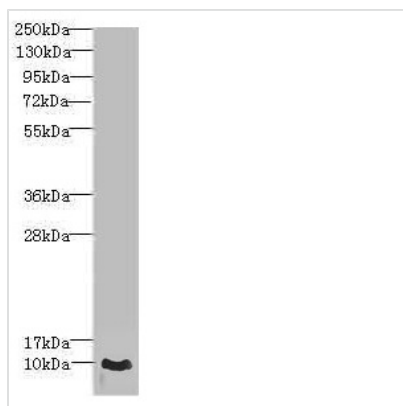




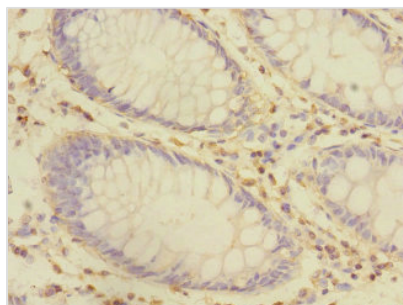
CRIP1 Antibody

Product Code	CSB-PA005969DSR1HU
Storage	Upon receipt, store at -20°C or -80°C. Avoid repeated freeze.
Uniprot No.	P50238
Immunogen	Recombinant Human Cysteine-rich protein 1 protein (1-77AA)
Raised In	Rabbit
Species Reactivity	Human
Tested Applications	ELISA, WB, IHC; Recommended dilution: WB:1:1000-1:5000, IHC:1:20-1:200
Form	Liquid
Conjugate	Non-conjugated
Storage Buffer	PBS with 0.02% sodium azide, 50% glycerol, pH7.3.
Purification Method	Antigen Affinity Purified
Isotype	IgG
Clonality	Polyclonal
Alias	Cysteine-rich protein 1 (CRP-1) (Cysteine-rich heart protein) (CRHP) (hCRHP) (Cysteine-rich intestinal protein) (CRIP), CRIP1, CRIP CRP1
Immunogen Species	Homo sapiens (Human)
Research Area	Signal Transduction
Target Names	CRIP1

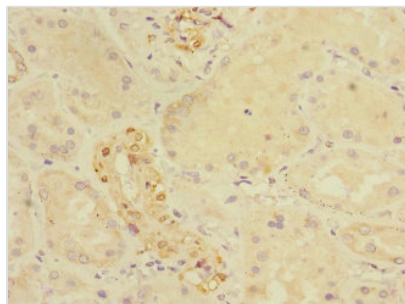
Image



Western blot
 All lanes: CRIP1 antibody at 1.44µg/ml + PC-3 whole cell lysate
 Secondary
 Goat polyclonal to rabbit IgG at 1/10000 dilution
 Predicted band size: 9 kDa
 Observed band size: 9 kDa



Immunohistochemistry of paraffin-embedded human colon cancer using CSB-PA005969DSR1HU at dilution of 1:100



Immunohistochemistry of paraffin-embedded human kidney tissue using CSB-PA005969DSR1HU at dilution of 1:100

Usage

For Research Use Only. Not for use in diagnostic or therapeutic procedures.