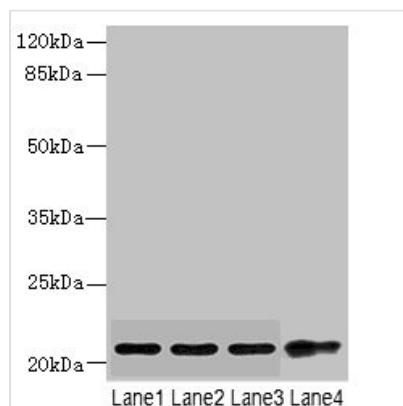




CSRP2 Antibody

Product Code	CSB-PA880995DSR1HU
Storage	Upon receipt, store at -20°C or -80°C. Avoid repeated freeze.
Uniprot No.	Q16527
Immunogen	Recombinant Human Cysteine and glycine-rich protein 2 protein (1-193AA)
Raised In	Rabbit
Species Reactivity	Human, Mouse
Tested Applications	ELISA, WB, IHC; Recommended dilution: WB:1:1000-1:5000, IHC:1:20-1:200
Form	Liquid
Conjugate	Non-conjugated
Storage Buffer	PBS with 0.02% sodium azide, 50% glycerol, pH7.3.
Purification Method	Antigen Affinity Purified
Isotype	IgG
Clonality	Polyclonal
Alias	Cysteine and glycine-rich protein 2 (Cysteine-rich protein 2) (CRP2) (LIM domain only protein 5) (LMO-5) (Smooth muscle cell LIM protein) (SmLIM), CSRP2, LMO5 SMLIM
Immunogen Species	Homo sapiens (Human)
Research Area	Epigenetics and Nuclear Signaling
Target Names	CSRP2

Image



Western blot

All lanes: CSRP2 antibody at 5.74µg/ml

Lane 1: Mouse lung tissue

Lane 2: A375 whole cell lysate

Lane 3: A549 whole cell lysate

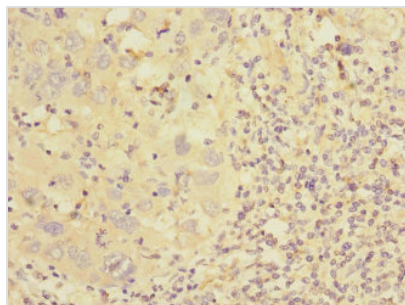
Lane 4: HepG2 whole cell lysate

Secondary

Goat polyclonal to rabbit IgG at 1/10000 dilution

Predicted band size: 21 kDa

Observed band size: 21 kDa



Immunohistochemistry of paraffin-embedded human liver cancer using CSB-PA880995DSR1HU at dilution of 1:100

Usage

For Research Use Only. Not for use in diagnostic or therapeutic procedures.