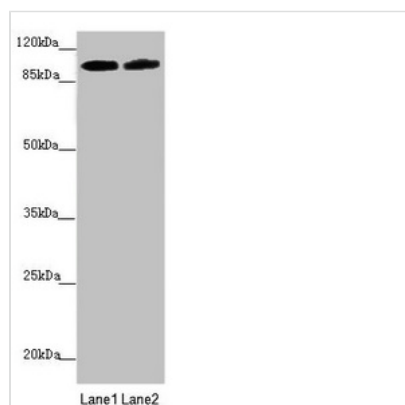




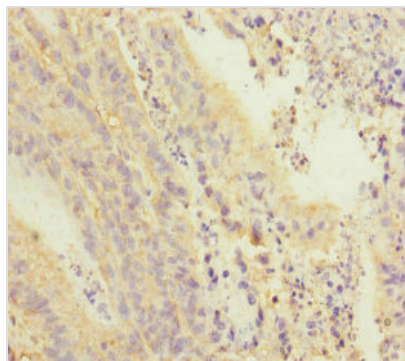
PDE6A Antibody

Product Code	CSB-PA2109ESR2HU
Storage	Upon receipt, store at -20°C or -80°C. Avoid repeated freeze.
Uniprot No.	P16499
Immunogen	Recombinant Human Rod cGMP-specific 3',5'-cyclic phosphodiesterase subunit alpha protein (656-860AA)
Raised In	Rabbit
Species Reactivity	Human, Mouse
Tested Applications	ELISA, WB, IHC; Recommended dilution: WB:1:1000-1:5000, IHC:1:20-1:200
Form	Liquid
Conjugate	Non-conjugated
Storage Buffer	PBS with 0.02% sodium azide, 50% glycerol, pH7.3.
Purification Method	Antigen Affinity Purified
Isotype	IgG
Clonality	Polyclonal
Alias	Rod cGMP-specific 3',5'-cyclic phosphodiesterase subunit alpha (GMP-PDE alpha) (EC 3.1.4.35) (PDE V-B1), PDE6A, PDEA
Immunogen Species	Homo sapiens (Human)
Research Area	Signal Transduction
Target Names	PDE6A

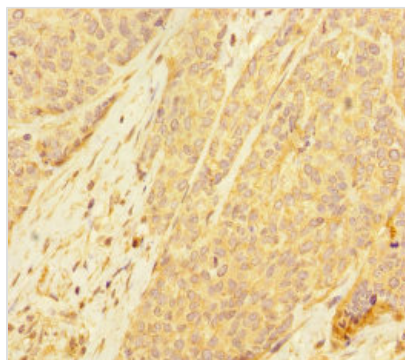
Image



Western blot
 All lanes: PDE6A antibody at 3.33µg/ml
 Lane 1: Mouse eye tissue
 Lane 2: A549 whole cell lysate
 Secondary
 Goat polyclonal to rabbit IgG at 1/10000 dilution
 Predicted band size: 100 kDa
 Observed band size: 100 kDa



Immunohistochemistry of paraffin-embedded human colon cancer using CSB-PA2109ESR2HU at dilution of 1:100



Immunohistochemistry of paraffin-embedded human ovarian cancer using CSB-PA2109ESR2HU at dilution of 1:100

Usage

For Research Use Only. Not for use in diagnostic or therapeutic procedures.