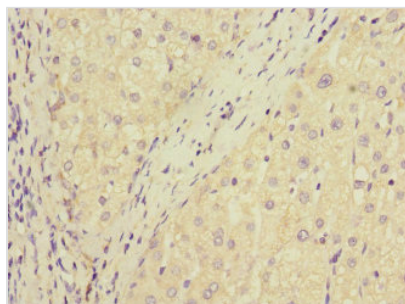




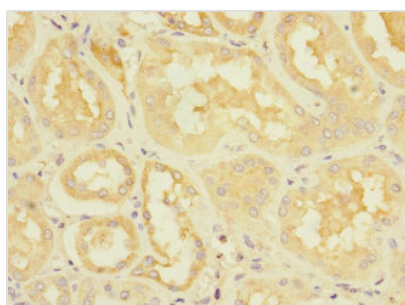
DUSP10 Antibody

Product Code	CSB-PA897321ESR1HU
Storage	Upon receipt, store at -20°C or -80°C. Avoid repeated freeze.
Uniprot No.	Q9Y6W6
Immunogen	Recombinant Human Dual specificity protein phosphatase 10 protein (1-300AA)
Raised In	Rabbit
Species Reactivity	Human
Tested Applications	ELISA, IHC; Recommended dilution: IHC:1:20-1:200
Form	Liquid
Conjugate	Non-conjugated
Storage Buffer	PBS with 0.02% sodium azide, 50% glycerol, pH7.3.
Purification Method	Antigen Affinity Purified
Isotype	IgG
Clonality	Polyclonal
Alias	Dual specificity protein phosphatase 10 (EC 3.1.3.16) (EC 3.1.3.48) (Mitogen-activated protein kinase phosphatase 5) (MAP kinase phosphatase 5) (MKP-5), DUSP10, MKP5
Immunogen Species	Homo sapiens (Human)
Research Area	Signal Transduction
Target Names	DUSP10

Image



Immunohistochemistry of paraffin-embedded human liver cancer using CSB-PA897321ESR1HU at dilution of 1:100



Immunohistochemistry of paraffin-embedded human kidney tissue using CSB-PA897321ESR1HU at dilution of 1:100



Usage

For Research Use Only. Not for use in diagnostic or therapeutic procedures.