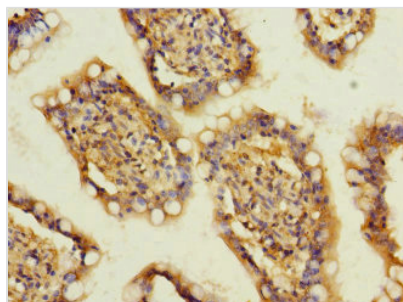




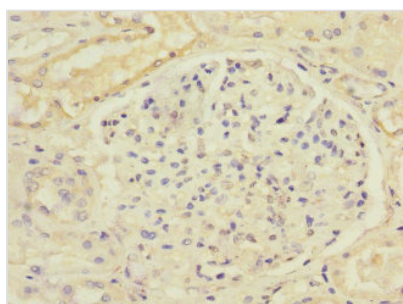
SLC13A2 Antibody

Product Code	CSB-PA618762ESR2HU
Storage	Upon receipt, store at -20°C or -80°C. Avoid repeated freeze.
Uniprot No.	Q13183
Immunogen	Recombinant Human Solute carrier family 13 member 2 protein (345-455AA)
Raised In	Rabbit
Species Reactivity	Human
Tested Applications	ELISA, IHC; Recommended dilution: IHC:1:20-1:200
Form	Liquid
Conjugate	Non-conjugated
Storage Buffer	PBS with 0.02% sodium azide, 50% glycerol, pH7.3.
Purification Method	Antigen Affinity Purified
Isotype	IgG
Clonality	Polyclonal
Alias	Solute carrier family 13 member 2 (Na(+)/dicarboxylate cotransporter 1) (NaDC-1) (Renal sodium/dicarboxylate cotransporter), SLC13A2, NADC1 SDCT1
Immunogen Species	Homo sapiens (Human)
Research Area	Signal Transduction
Target Names	SLC13A2

Image



Immunohistochemistry of paraffin-embedded human colon cancer using CSB-PA618762ESR2HU at dilution of 1:100



Immunohistochemistry of paraffin-embedded human kidney tissue using CSB-PA618762ESR2HU at dilution of 1:100



Usage

For Research Use Only. Not for use in diagnostic or therapeutic procedures.