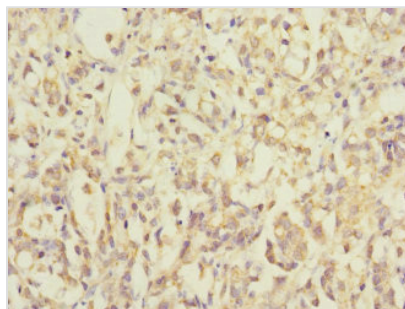




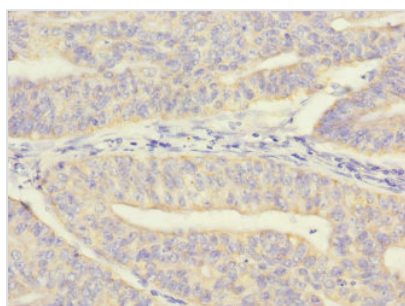
# MRPL12 Antibody

<b>Product Code</b>	CSB-PA014817ESR1HU
<b>Storage</b>	Upon receipt, store at -20°C or -80°C. Avoid repeated freeze.
<b>Uniprot No.</b>	P52815
<b>Immunogen</b>	Recombinant Human 39S ribosomal protein L12, mitochondrial protein (1-198AA)
<b>Raised In</b>	Rabbit
<b>Species Reactivity</b>	Human
<b>Tested Applications</b>	ELISA, IHC; Recommended dilution: IHC:1:20-1:200
<b>Form</b>	Liquid
<b>Conjugate</b>	Non-conjugated
<b>Storage Buffer</b>	PBS with 0.02% sodium azide, 50% glycerol, pH7.3.
<b>Purification Method</b>	Antigen Affinity Purified
<b>Isotype</b>	IgG
<b>Clonality</b>	Polyclonal
<b>Alias</b>	39S ribosomal protein L12, mitochondrial (L12mt) (MRP-L12) (5c5-2) (Mitochondrial large ribosomal subunit protein bL12m), MRPL12, MRPL7 RPML12
<b>Immunogen Species</b>	Homo sapiens (Human)
<b>Research Area</b>	Others
<b>Target Names</b>	MRPL12

## Image



Immunohistochemistry of paraffin-embedded human gastric cancer using CSB-PA014817ESR1HU at dilution of 1:100



Immunohistochemistry of paraffin-embedded human endometrial cancer using CSB-PA014817ESR1HU at dilution of 1:100



---

**Usage**

For Research Use Only. Not for use in diagnostic or therapeutic procedures.