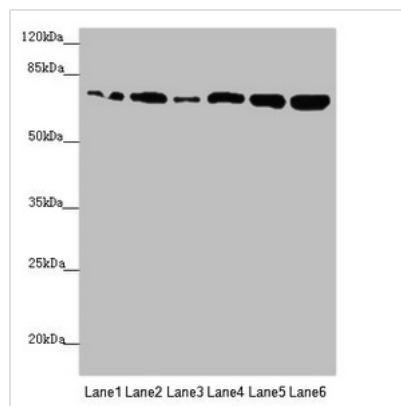




KIZ Antibody

Product Code	CSB-PA644808ESR2HU
Storage	Upon receipt, store at -20°C or -80°C. Avoid repeated freeze.
Uniprot No.	Q2M2Z5
Immunogen	Recombinant Human Centrosomal protein kizuna protein (1-240AA)
Raised In	Rabbit
Species Reactivity	Human
Tested Applications	ELISA, WB, IHC; Recommended dilution: WB:1:1000-1:5000, IHC:1:20-1:200
Form	Liquid
Conjugate	Non-conjugated
Storage Buffer	PBS with 0.02% sodium azide, 50% glycerol, pH7.3.
Purification Method	Antigen Affinity Purified
Isotype	IgG
Clonality	Polyclonal
Alias	Centrosomal protein kizuna (Polo-like kinase 1 substrate 1), KIZ, C20orf19 NCRNA00153 PLK1S1
Immunogen Species	Homo sapiens (Human)
Research Area	Cell Biology
Target Names	KIZ

Image



Western blot

All lanes: KIZ antibody at 2.89µg/ml

Lane 1: HepG2 whole cell lysate

Lane 2: A549 whole cell lysate

Lane 3: CEM whole cell lysate

Lane 4: HeLa whole cell lysate

Lane 5: Jurkat whole cell lysate

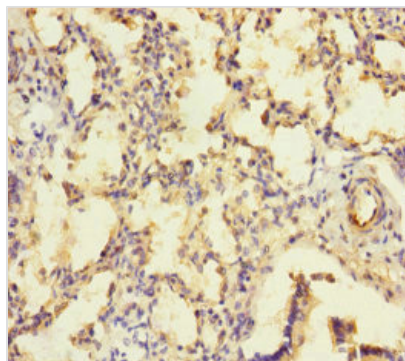
Lane 6: 293T whole cell lysate

Secondary

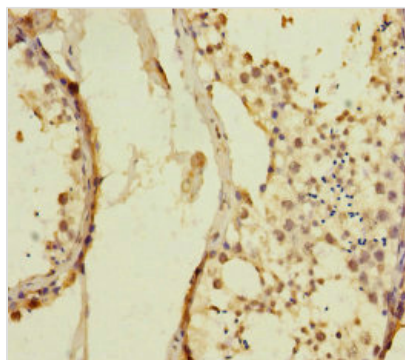
Goat polyclonal to rabbit IgG at 1/10000 dilution

Predicted band size: 76, 63, 70, 74, 60 kDa

Observed band size: 76 kDa



Immunohistochemistry of paraffin-embedded human lung tissue using CSB-PA644808ESR2HU at dilution of 1:100



Immunohistochemistry of paraffin-embedded human testis tissue using CSB-PA644808ESR2HU at dilution of 1:100

Usage

For Research Use Only. Not for use in diagnostic or therapeutic procedures.