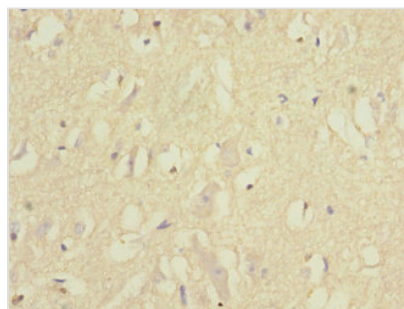




EPHB1 Antibody

Product Code	CSB-PA007729ESR2HU
Storage	Upon receipt, store at -20°C or -80°C. Avoid repeated freeze.
Uniprot No.	P54762
Immunogen	Recombinant Human Ephrin type-B receptor 1 protein (260-500AA)
Raised In	Rabbit
Species Reactivity	Human
Tested Applications	ELISA, IHC; Recommended dilution: IHC:1:20-1:200
Form	Liquid
Conjugate	Non-conjugated
Storage Buffer	PBS with 0.02% sodium azide, 50% glycerol, pH7.3.
Purification Method	Antigen Affinity Purified
Isotype	IgG
Clonality	Polyclonal
Alias	Ephrin type-B receptor 1 (EC 2.7.10.1) (ELK) (EPH tyrosine kinase 2) (EPH-like kinase 6) (EK6) (hEK6) (Neuronally-expressed EPH-related tyrosine kinase) (NET) (Tyrosine-protein kinase receptor EPH-2), EPHB1, ELK EPHT2 HEK6 NET
Immunogen Species	Homo sapiens (Human)
Research Area	Cardiovascular
Target Names	EPHB1

Image



Immunohistochemistry of paraffin-embedded human brain tissue using CSB-PA007729ESR2HU at dilution of 1:100

Usage

For Research Use Only. Not for use in diagnostic or therapeutic procedures.