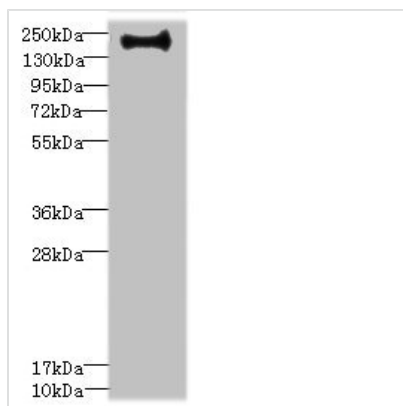




ERBIN Antibody

Product Code	CSB-PA857021ESR1HU
Storage	Upon receipt, store at -20°C or -80°C. Avoid repeated freeze.
Uniprot No.	Q96RT1
Immunogen	Recombinant Human Erbin protein (1193-1412AA)
Raised In	Rabbit
Species Reactivity	Human
Tested Applications	ELISA, WB, IHC; Recommended dilution: WB:1:1000-1:5000, IHC:1:20-1:200
Form	Liquid
Conjugate	Non-conjugated
Storage Buffer	PBS with 0.02% sodium azide, 50% glycerol, pH7.3.
Purification Method	Antigen Affinity Purified
Isotype	IgG
Clonality	Polyclonal
Alias	Erbin (Densin-180-like protein) (ErbB2-interacting protein) (Protein LAP2), ERBIN, ERBB2IP KIAA1225 LAP2
Immunogen Species	Homo sapiens (Human)
Research Area	Signal Transduction
Target Names	ERBIN

Image

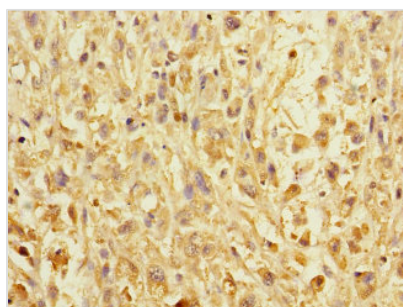


Western blot

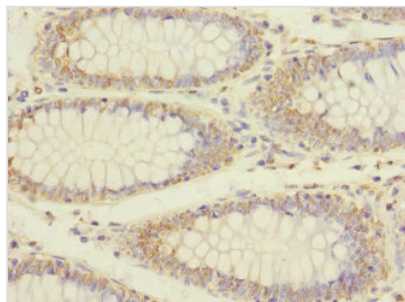
All lanes: VSX1 antibody IgG at 0.87µg/ml +
Hela whole cell lysate

Secondary

Goat polyclonal to rabbit IgG at 1/10000 dilution
Predicted band size: 159, 154, 153, 152, 151,
147, 160 kDa
Observed band size: 159 kDa



Immunohistochemistry of paraffin-embedded
human melanoma using CSB-
PA857021ESR1HU at dilution of 1:100



Immunohistochemistry of paraffin-embedded human colon cancer using CSB-PA857021ESR1HU at dilution of 1:100

Usage

For Research Use Only. Not for use in diagnostic or therapeutic procedures.