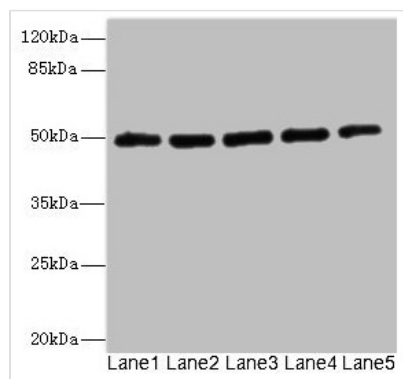




# KCNJ4 Antibody

<b>Product Code</b>	CSB-PA012057ESR1HU
<b>Storage</b>	Upon receipt, store at -20°C or -80°C. Avoid repeated freeze.
<b>Uniprot No.</b>	P48050
<b>Immunogen</b>	Recombinant Human Inward rectifier potassium channel 4 protein (316-445AA)
<b>Raised In</b>	Rabbit
<b>Species Reactivity</b>	Human
<b>Tested Applications</b>	ELISA, WB, IHC; Recommended dilution: WB:1:1000-1:5000, IHC:1:20-1:200
<b>Form</b>	Liquid
<b>Conjugate</b>	Non-conjugated
<b>Storage Buffer</b>	PBS with 0.02% sodium azide, 50% glycerol, pH7.3.
<b>Purification Method</b>	Antigen Affinity Purified
<b>Isotype</b>	IgG
<b>Clonality</b>	Polyclonal
<b>Alias</b>	Inward rectifier potassium channel 4 (HIRK2) (HRK1) (Hippocampal inward rectifier) (HIR) (Inward rectifier K(+)) channel Kir2.3) (IRK-3) (Potassium channel, inwardly rectifying subfamily J member 4), KCNJ4, IRK3
<b>Immunogen Species</b>	Homo sapiens (Human)
<b>Research Area</b>	Neuroscience
<b>Target Names</b>	KCNJ4

## Image



### Western blot

All lanes: KCNJ4 antibody at 2.04µg/ml

Lane 1: Hela whole cell lysate

Lane 2: 293T whole cell lysate

Lane 3: HepG2 whole cell lysate

Lane 4: Jurkat whole cell lysate

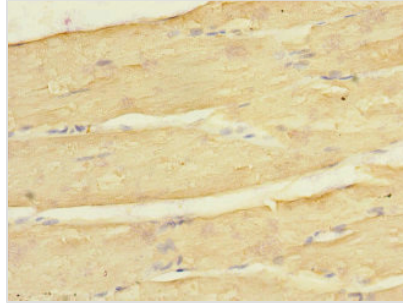
Lane 5: MCF-7 whole cell lysate

Secondary

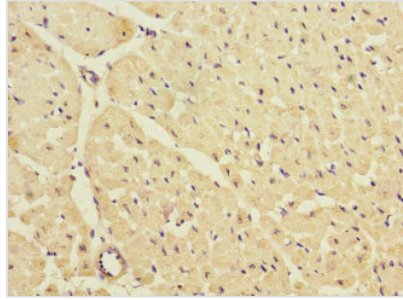
Goat polyclonal to rabbit IgG at 1/10000 dilution

Predicted band size: 50 kDa

Observed band size: 50 kDa



Immunohistochemistry of paraffin-embedded human skeletal muscle tissue using CSB-PA012057ESR1HU at dilution of 1:100



Immunohistochemistry of paraffin-embedded human heart tissue using CSB-PA012057ESR1HU at dilution of 1:100

## Usage

For Research Use Only. Not for use in diagnostic or therapeutic procedures.