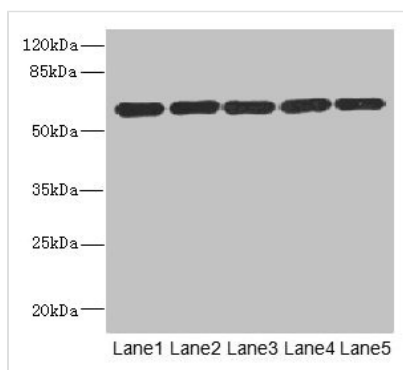




ARHGEF3 Antibody

| | |
|----------------------------|---|
| Product Code | CSB-PA878863ESR2HU |
| Storage | Upon receipt, store at -20°C or -80°C. Avoid repeated freeze. |
| Uniprot No. | Q9NR81 |
| Immunogen | Recombinant Human Rho guanine nucleotide exchange factor 3 protein (287-526AA) |
| Raised In | Rabbit |
| Species Reactivity | Human |
| Tested Applications | ELISA, WB, IHC; Recommended dilution: WB:1:1000-1:5000, IHC:1:20-1:200 |
| Form | Liquid |
| Conjugate | Non-conjugated |
| Storage Buffer | PBS with 0.02% sodium azide, 50% glycerol, pH7.3. |
| Purification Method | Antigen Affinity Purified |
| Isotype | IgG |
| Clonality | Polyclonal |
| Alias | Rho guanine nucleotide exchange factor 3 (Exchange factor found in platelets and leukemic and neuronal tissues) (XPLN), ARHGEF3 |
| Immunogen Species | Homo sapiens (Human) |
| Research Area | Signal Transduction |
| Target Names | ARHGEF3 |

Image



Western blot

All lanes: ARHGEF3 antibody at 2.21µg/ml

Lane 1: MCF-7 whole cell lysate

Lane 2: HepG2 whole cell lysate

Lane 3: Jurkat whole cell lysate

Lane 4: Hela whole cell lysate

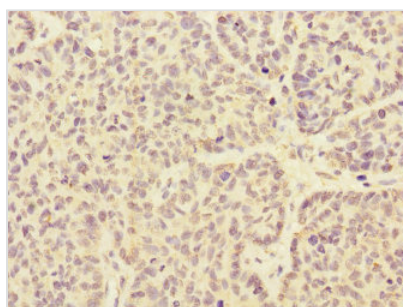
Lane 5: 293T whole cell lysate

Secondary

Goat polyclonal to rabbit IgG at 1/10000 dilution

Predicted band size: 60, 64, 61, 37 kDa

Observed band size: 60 kDa



Immunohistochemistry of paraffin-embedded

human ovarian cancer using CSB-

PA878863ESR2HU at dilution of 1:100



Usage

For Research Use Only. Not for use in diagnostic or therapeutic procedures.