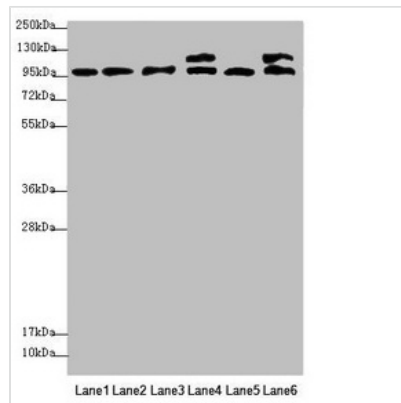




NAA25 Antibody

Product Code	CSB-PA617948ESR1HU
Storage	Upon receipt, store at -20°C or -80°C. Avoid repeated freeze.
Uniprot No.	Q14CX7
Immunogen	Recombinant Human N-alpha-acetyltransferase 25, NatB auxiliary subunit protein (703-972AA)
Raised In	Rabbit
Species Reactivity	Human, Mouse
Tested Applications	ELISA, WB, IHC; Recommended dilution: WB:1:1000-1:5000, IHC:1:20-1:200
Form	Liquid
Conjugate	Non-conjugated
Storage Buffer	PBS with 0.02% sodium azide, 50% glycerol, pH7.3.
Purification Method	Antigen Affinity Purified
Isotype	IgG
Clonality	Polyclonal
Alias	N-alpha-acetyltransferase 25, NatB auxiliary subunit (Mitochondrial distribution and morphology protein 20) (N-terminal acetyltransferase B complex subunit MDM20) (NatB complex subunit MDM20) (N-terminal acetyltransferase B complex subunit NAA25) (p120), NAA25, C12orf30 MDM20 NAP1
Immunogen Species	Homo sapiens (Human)
Research Area	Epigenetics and Nuclear Signaling
Target Names	NAA25

Image



Western blot

All lanes: NAA25 antibody at 2.12µg/ml

Lane 1: Mouse liver tissue

Lane 2: Mouse kidney tissue

Lane 3: Hela whole cell lysate

Lane 4: 293T whole cell lysate

Lane 5: A549 whole cell lysate

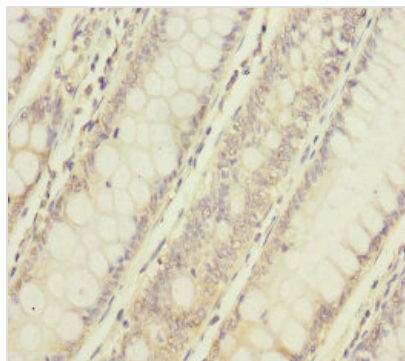
Lane 6: HepG2 whole cell lysate

Secondary

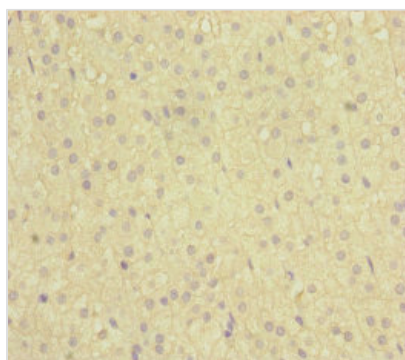
Goat polyclonal to rabbit IgG at 1/10000 dilution

Predicted band size: 113, 100 kDa

Observed band size: 113, 100 kDa



Immunohistochemistry of paraffin-embedded human colon cancer using CSB-PA617948ESR1HU at dilution of 1:100



Immunohistochemistry of paraffin-embedded human adrenal gland tissue using CSB-PA617948ESR1HU at dilution of 1:100

Usage

For Research Use Only. Not for use in diagnostic or therapeutic procedures.