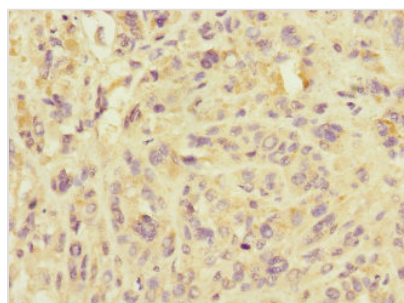




IMMP2L Antibody

Product Code	CSB-PA822306ESR1HU
Storage	Upon receipt, store at -20°C or -80°C. Avoid repeated freeze.
Uniprot No.	Q96T52
Immunogen	Recombinant Human Mitochondrial inner membrane protease subunit 2 protein (1-100AA)
Raised In	Rabbit
Species Reactivity	Human
Tested Applications	ELISA, IHC; Recommended dilution: IHC:1:20-1:200
Form	Liquid
Conjugate	Non-conjugated
Storage Buffer	PBS with 0.02% sodium azide, 50% glycerol, pH7.3.
Purification Method	Antigen Affinity Purified
Isotype	IgG
Clonality	Polyclonal
Alias	Mitochondrial inner membrane protease subunit 2 (EC 3.4.21.-) (IMP2-like protein), IMMP2L
Immunogen Species	Homo sapiens (Human)
Research Area	Signal Transduction
Target Names	IMMP2L

Image


Immunohistochemistry of paraffin-embedded human melanoma using CSB-PA822306ESR1HU at dilution of 1:100

Usage

For Research Use Only. Not for use in diagnostic or therapeutic procedures.