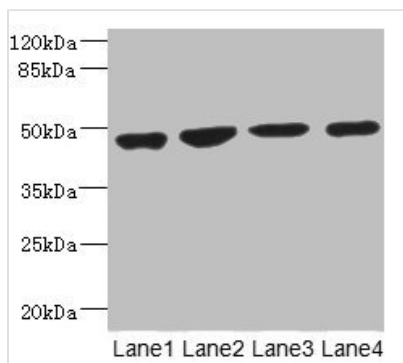




MTERF3 Antibody

Product Code	CSB-PA822201ESR1HU
Storage	Upon receipt, store at -20°C or -80°C. Avoid repeated freeze.
Uniprot No.	Q96E29
Immunogen	Recombinant Human Transcription termination factor 3, mitochondrial protein (69-300AA)
Raised In	Rabbit
Species Reactivity	Human
Tested Applications	ELISA, WB, IHC; Recommended dilution: WB:1:1000-1:5000, IHC:1:20-1:200
Form	Liquid
Conjugate	Non-conjugated
Storage Buffer	PBS with 0.02% sodium azide, 50% glycerol, pH7.3.
Purification Method	Antigen Affinity Purified
Isotype	IgG
Clonality	Polyclonal
Alias	Transcription termination factor 3, mitochondrial (Mitochondrial transcription termination factor 3) (mTERF3) (mTERF domain-containing protein 1, mitochondrial), MTERF3, MTERFD1
Immunogen Species	Homo sapiens (Human)
Research Area	Epigenetics and Nuclear Signaling
Target Names	MTERF3

Image



Western blot

All lanes: MTERF3 antibody at 3.94µg/ml

Lane 1: U251 whole cell lysate

Lane 2: 293T whole cell lysate

Lane 3: HeLa whole cell lysate

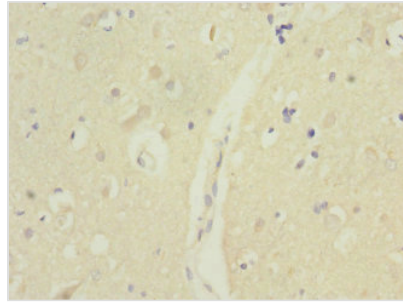
Lane 4: K562 whole cell lysate

Secondary

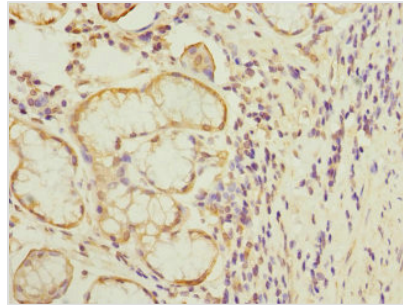
Goat polyclonal to rabbit IgG at 1/10000 dilution

Predicted band size: 48, 38, 35 kDa

Observed band size: 48 kDa



Immunohistochemistry of paraffin-embedded human brain tissue using CSB-PA822201ESR1HU at dilution of 1:100



Immunohistochemistry of paraffin-embedded human gastric cancer using CSB-PA822201ESR1HU at dilution of 1:100

Usage

For Research Use Only. Not for use in diagnostic or therapeutic procedures.