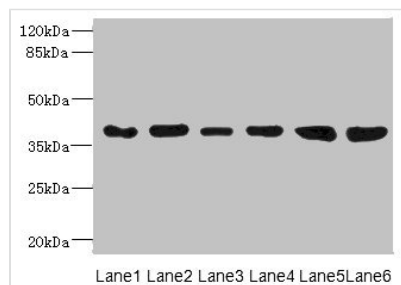




TIMM50 Antibody

Product Code	CSB-PA674736ESR2HU
Storage	Upon receipt, store at -20°C or -80°C. Avoid repeated freeze.
Uniprot No.	Q3ZCQ8
Immunogen	Recombinant Human Mitochondrial import inner membrane translocase subunit TIM50 protein (87-353AA)
Raised In	Rabbit
Species Reactivity	Human, Rat
Tested Applications	ELISA, WB, IHC; Recommended dilution: WB:1:1000-1:5000, IHC:1:20-1:200
Form	Liquid
Conjugate	Non-conjugated
Storage Buffer	PBS with 0.02% sodium azide, 50% glycerol, pH7.3.
Purification Method	Antigen Affinity Purified
Isotype	IgG
Clonality	Polyclonal
Alias	Mitochondrial import inner membrane translocase subunit TIM50, TIMM50, TIM50
Immunogen Species	Homo sapiens (Human)
Research Area	Signal Transduction
Target Names	TIMM50

Image



Western blot

All lanes: TIMM50 antibody at 4.05µg/ml

Lane 1: Rat heart tissue

Lane 2: MM231 whole cell lysate

Lane 3: MCF-7 whole cell lysate

Lane 4: Hela whole cell lysate

Lane 5: 293T whole cell lysate

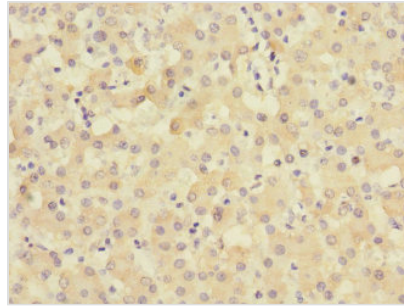
Lane 6: HepG2 whole cell lysate

Secondary

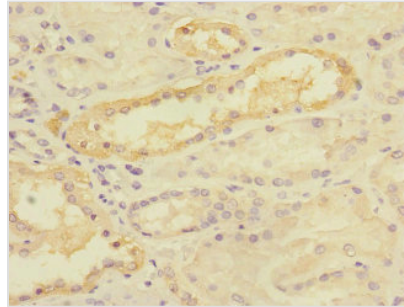
Goat polyclonal to rabbit IgG at 1/10000 dilution

Predicted band size: 40, 51, 28 kDa

Observed band size: 40 kDa



Immunohistochemistry of paraffin-embedded human liver tissue using CSB-PA674736ESR2HU at dilution of 1:100



Immunohistochemistry of paraffin-embedded human kidney tissue using CSB-PA674736ESR2HU at dilution of 1:100

Usage

For Research Use Only. Not for use in diagnostic or therapeutic procedures.