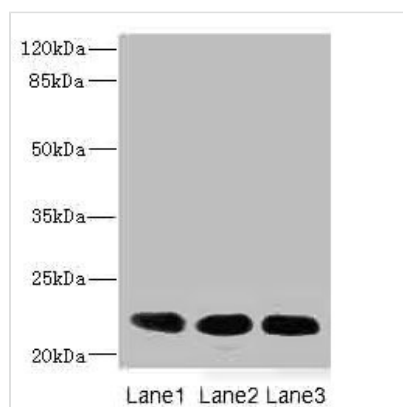




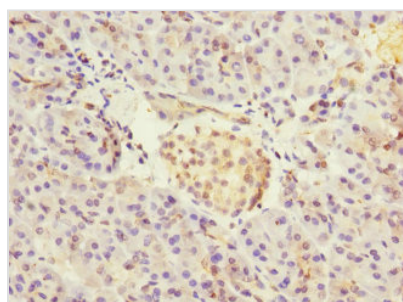
CRIP2 Antibody

Product Code	CSB-PA005970DSR1HU
Storage	Upon receipt, store at -20°C or -80°C. Avoid repeated freeze.
Uniprot No.	P52943
Immunogen	Recombinant Human Cysteine-rich protein 2 protein (1-208AA)
Raised In	Rabbit
Species Reactivity	Human, Mouse, Rat
Tested Applications	ELISA, WB, IHC; Recommended dilution: WB:1:1000-1:5000, IHC:1:20-1:200
Form	Liquid
Conjugate	Non-conjugated
Storage Buffer	PBS with 0.02% sodium azide, 50% glycerol, pH7.3.
Purification Method	Antigen Affinity Purified
Isotype	IgG
Clonality	Polyclonal
Alias	Cysteine-rich protein 2 (CRP-2) (Protein ESP1), CRIP2, CRP2
Immunogen Species	Homo sapiens (Human)
Research Area	Epigenetics and Nuclear Signaling
Target Names	CRIP2

Image



Western blot
 All lanes: CRIP2 antibody at 4.68µg/ml
 Lane 1: Rat heart tissue
 Lane 2: Mouse lung tissue
 Lane 3: MCF-7 whole cell lysate
 Secondary
 Goat polyclonal to rabbit IgG at 1/10000 dilution
 Predicted band size: 23, 31 kDa
 Observed band size: 23 kDa



Immunohistochemistry of paraffin-embedded human pancreatic tissue using CSB-PA005970DSR1HU at dilution of 1:100



Usage

For Research Use Only. Not for use in diagnostic or therapeutic procedures.