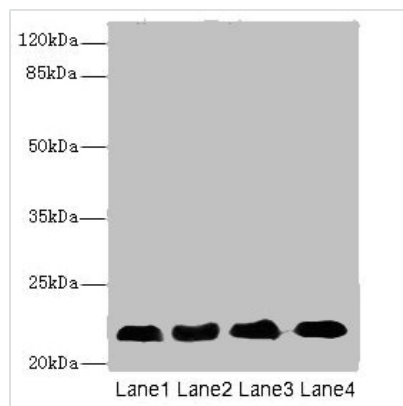




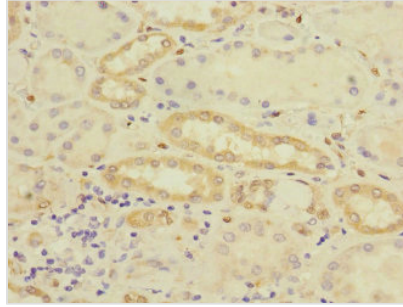
CRIP2 Antibody

| | |
|----------------------------|--|
| Product Code | CSB-PA005970DSR2HU |
| Storage | Upon receipt, store at -20°C or -80°C. Avoid repeated freeze. |
| Uniprot No. | P52943 |
| Immunogen | Recombinant Human Cysteine-rich protein 2 protein (1-208AA) |
| Raised In | Rabbit |
| Species Reactivity | Human, Mouse, Rat |
| Tested Applications | ELISA, WB, IHC, IF; Recommended dilution: WB:1:500-1:2000, IHC:1:20-1:200, IF:1:50-1:200 |
| Form | Liquid |
| Conjugate | Non-conjugated |
| Storage Buffer | PBS with 0.02% sodium azide, 50% glycerol, pH7.3. |
| Purification Method | Antigen Affinity Purified |
| Isotype | IgG |
| Clonality | Polyclonal |
| Alias | Cysteine-rich protein 2 (CRP-2) (Protein ESP1), CRIP2, CRP2 |
| Immunogen Species | Homo sapiens (Human) |
| Research Area | Epigenetics and Nuclear Signaling |
| Target Names | CRIP2 |

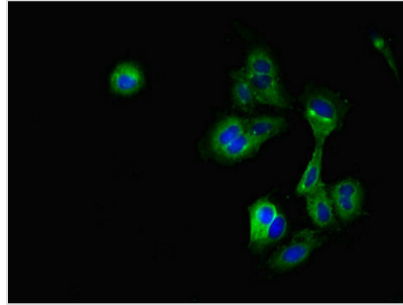
Image



Western blot
 All lanes: CRIP2 antibody at 5.93µg/ml
 Lane 1: Rat heart tissue
 Lane 2: Mouse lung tissue
 Lane 3: HeLa whole cell lysate
 Lane 4: MCF-7 whole cell lysate
 Secondary
 Goat polyclonal to rabbit IgG at 1/10000 dilution
 Predicted band size: 23, 31 kDa
 Observed band size: 23 kDa



Immunohistochemistry of paraffin-embedded human kidney tissue using CSB-PA005970DSR2HU at dilution of 1:100



Immunofluorescent analysis of HeLa cells using CSB-PA005970DSR2HU at dilution of 1:100 and Alexa Fluor 488-conjugated AffiniPure Goat Anti-Rabbit IgG(H+L)