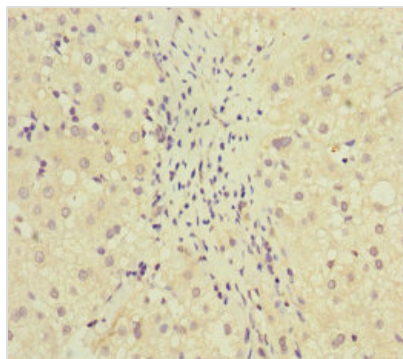




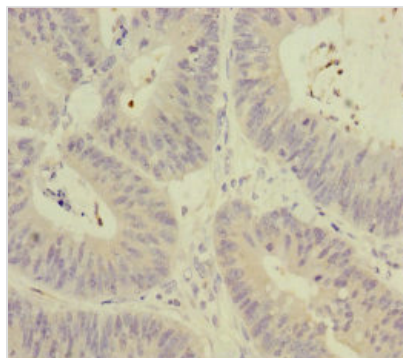
MCCC1 Antibody

Product Code	CSB-PA853497ESR1HU
Storage	Upon receipt, store at -20°C or -80°C. Avoid repeated freeze.
Uniprot No.	Q96RQ3
Immunogen	Recombinant Human Methylcrotonoyl-CoA carboxylase subunit alpha, mitochondrial protein (526-725AA)
Raised In	Rabbit
Species Reactivity	Human
Tested Applications	ELISA, IHC, IP; Recommended dilution: IHC:1:20-1:200, IP:1:200-1:2000
Form	Liquid
Conjugate	Non-conjugated
Storage Buffer	PBS with 0.02% sodium azide, 50% glycerol, pH7.3.
Purification Method	Antigen Affinity Purified
Isotype	IgG
Clonality	Polyclonal
Alias	Methylcrotonoyl-CoA carboxylase subunit alpha, mitochondrial (MCCase subunit alpha) (EC 6.4.1.4) (3-methylcrotonyl-CoA carboxylase 1) (3-methylcrotonyl-CoA carboxylase biotin-containing subunit) (3-methylcrotonyl-CoA:carbon dioxide ligase subunit alpha), MCCC1, MCCA
Immunogen Species	Homo sapiens (Human)
Research Area	Tags & Cell Markers
Target Names	MCCC1

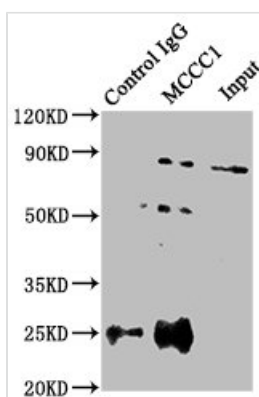
Image



Immunohistochemistry of paraffin-embedded human liver cancer using CSB-PA853497ESR1HU at dilution of 1:100



Immunohistochemistry of paraffin-embedded human colon cancer using CSB-PA853497ESR1HU at dilution of 1:100



Immunoprecipitating MCCC1 in HEK293 whole cell lysate
 Lane 1: Rabbit control IgG instead of CSB-PA853497ESR1HU in HEK293 whole cell lysate. For western blotting, a HRP-conjugated Protein G antibody was used as the secondary antibody (1/2000)
 Lane 2: CSB-PA853497ESR1HU (8μg) + HEK293 whole cell lysate (500μg)
 Lane 3: HEK293 whole cell lysate (10μg)