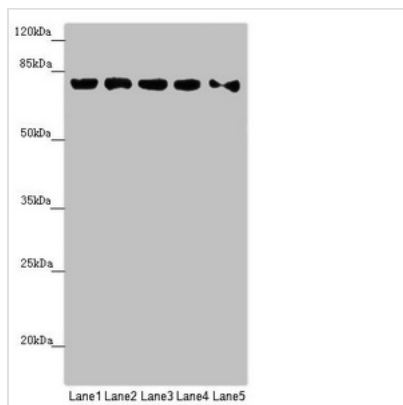




# MCCC1 Antibody

<b>Product Code</b>	CSB-PA853497ESR2HU
<b>Storage</b>	Upon receipt, store at -20°C or -80°C. Avoid repeated freeze.
<b>Uniprot No.</b>	Q96RQ3
<b>Immunogen</b>	Recombinant Human Methylcrotonoyl-CoA carboxylase subunit alpha, mitochondrial protein (526-725AA)
<b>Raised In</b>	Rabbit
<b>Species Reactivity</b>	Human
<b>Tested Applications</b>	ELISA, WB, IHC; Recommended dilution: WB:1:1000-1:5000, IHC:1:20-1:200
<b>Form</b>	Liquid
<b>Conjugate</b>	Non-conjugated
<b>Storage Buffer</b>	PBS with 0.02% sodium azide, 50% glycerol, pH7.3.
<b>Purification Method</b>	Antigen Affinity Purified
<b>Isotype</b>	IgG
<b>Clonality</b>	Polyclonal
<b>Alias</b>	Methylcrotonoyl-CoA carboxylase subunit alpha, mitochondrial (MCCase subunit alpha) (EC 6.4.1.4) (3-methylcrotonyl-CoA carboxylase 1) (3-methylcrotonyl-CoA carboxylase biotin-containing subunit) (3-methylcrotonyl-CoA:carbon dioxide ligase subunit alpha), MCCC1, MCCA
<b>Immunogen Species</b>	Homo sapiens (Human)
<b>Research Area</b>	Tags & Cell Markers
<b>Target Names</b>	MCCC1

## Image



### Western blot

All lanes: MCCC1 antibody at 0.89µg/ml

Lane 1: HepG2 whole cell lysate

Lane 2: 293T whole cell lysate

Lane 3: Hela whole cell lysate

Lane 4: MCF-7 whole cell lysate

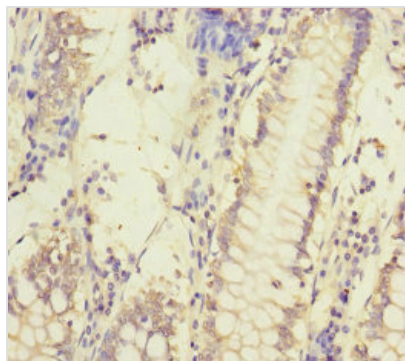
Lane 5: A549 whole cell lysate

Secondary

Goat polyclonal to rabbit IgG at 1/10000 dilution

Predicted band size: 81 kDa

Observed band size: 81 kDa



Immunohistochemistry of paraffin-embedded human colon cancer using CSB-PA853497ESR2HU at dilution of 1:100

---

**Usage**

For Research Use Only. Not for use in diagnostic or therapeutic procedures.