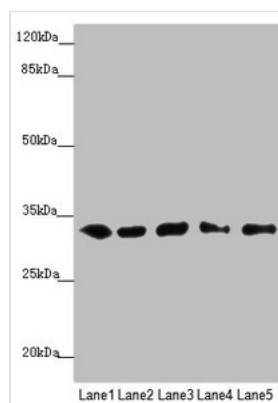




MMACHC Antibody

Product Code	CSB-PA896896ESR2HU
Storage	Upon receipt, store at -20°C or -80°C. Avoid repeated freeze.
Uniprot No.	Q9Y4U1
Immunogen	Recombinant Human Methylmalonic aciduria and homocystinuria type C protein (63-282AA)
Raised In	Rabbit
Species Reactivity	Human
Tested Applications	ELISA, WB, IHC; Recommended dilution: WB:1:1000-1:5000, IHC:1:20-1:200
Form	Liquid
Conjugate	Non-conjugated
Storage Buffer	PBS with 0.02% sodium azide, 50% glycerol, pH7.3.
Purification Method	Antigen Affinity Purified
Isotype	IgG
Clonality	Polyclonal
Alias	Methylmalonic aciduria and homocystinuria type C protein (EC 1.16.1.-) (CblC) (Cyanocobalamin reductase (cyanide-eliminating)), MMACHC
Immunogen Species	Homo sapiens (Human)
Research Area	Signal Transduction
Target Names	MMACHC

Image



Western blot

All lanes: MMACHC antibody at 5.16µg/ml

Lane 1: HepG2 whole cell lysate

Lane 2: K562 whole cell lysate

Lane 3: A549 whole cell lysate

Lane 4: Hela whole cell lysate

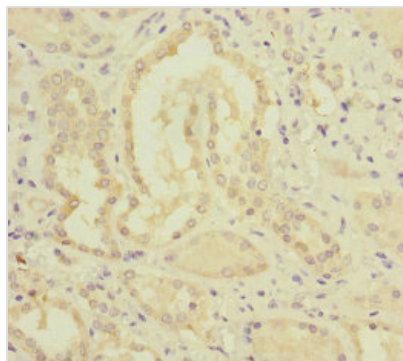
Lane 5: Raji whole cell lysate

Secondary

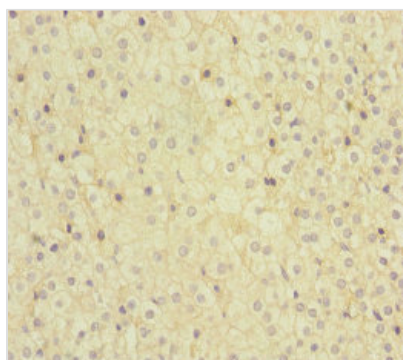
Goat polyclonal to rabbit IgG at 1/10000 dilution

Predicted band size: 32 kDa

Observed band size: 32 kDa



Immunohistochemistry of paraffin-embedded human kidney tissue using CSB-PA896896ESR2HU at dilution of 1:100



Immunohistochemistry of paraffin-embedded human adrenal gland tissue using CSB-PA896896ESR2HU at dilution of 1:100